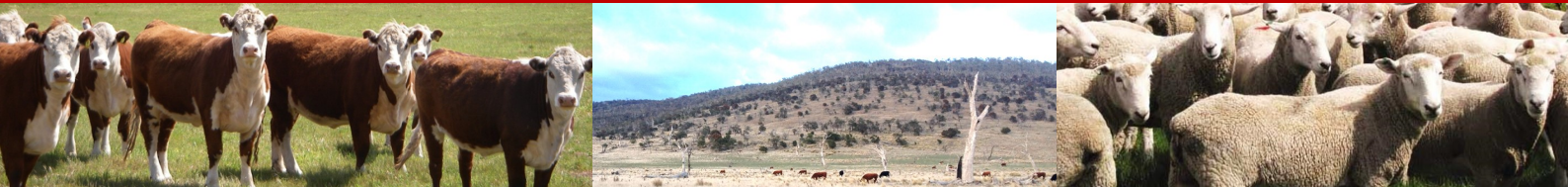




RED MEAT UPDATES

TASMANIA

8.45am - 5.30pm • Friday, 22 July 2016 • The Tramsheds, Launceston



BEEF • SHEEP • IRRIGATED PASTURE • DRYLAND PASTURE

Information, networking and ***research updates***
for Tasmania's red meat industry

Program includes:

MLA update – Richard Norton, Managing Director, MLA

Maximising beef herd fertility - Shane Thomson, Holebrook Vet Centre

Upskilling in pasture management - Jock Hughes, Cluden Newry Angus, Longford

What do the top 20% of producers do differently? - John Francis, Holmes Sackett

Virtual Farm Tour of three Tassie farms - James Walch, Chris Headlam & Matthew Lester

Lucerne grazing management survey findings - George Shea, Lyndall, Hamilton

Carcass quality and measurement - Tom Bull, Lambpro & Richard Apps, MLA

Managing our beef business - Alison Napier, Harefield

Producer case studies + more...

For more information go to www.redmeatupdates.com

[Register online](#)

Cost: Red meat producers FREE • Sponsors FREE* • Others \$300 ex gst

**the number of free tickets for sponsors varies based on sponsorship package.*



Virtual Farm Tour sponsor:





RED MEAT UPDATES

TASMANIA

8.45am – 5.30pm • 22 July 2016 • The Tramsheds, Launceston

Session 1

Chair: Georgie Burbury, Eastfield Lamb

Welcome

Georgie Burbury, Chair, Red Meat Updates Working Group

Welcome address — MLA towards 2020: enhancing the profitability and sustainability of the red meat industry

Richard Norton, Managing Director, MLA

Session 2: Red Meat Champions Session

Chair: Greg Bott, Roberts Ltd

Rabobank Industry Innovator

Video presentation

Greenham Tasmania Gate to Plate Producer

Leon Quilliam, Muirhead Enterprises, Winnaleah TAS

Angus Australia Emerging Leader

Richard Sutton, Taroon Pastoral, King Island TAS

11.00–11.25am Morning tea

Session 3: Concurrent Sessions

Sheep Updates

Chair: Georgie Burbury, Eastfield Lamb

What do the top 20% of sheep producers do differently?

John Francis, Holmes Sackett, Wagga Wagga NSW

Objective measurement — revolutionising carcase assessment

Richard Apps, Program Manager: Genetics Implementation and Sheep R&D, MLA

Capturing branded opportunities in lamb

Tom Bull, LAMBPRO Partnership, Holbrook NSW

Risk factors for sudden death of lambs grazing lucerne

George Shea, Lyndall, Hamilton TAS

Beef Updates

Chair: Frank Archer, Landfall Angus

What do the top 20% of beef producers do differently?

Basil Doonan, Macquarie Franklin, Devonport TAS

Optimising female management and productivity in beef breeding enterprises

Dr Shane Thomson, Holbrook Vet Centre, Holbrook NSW

Managing our beef business

Alison Napier, Harefield, St Marys TAS

1.00-1.45pm Lunch

Session 4: Red Meat Producer Consultation Update

Southern Australian Meat Research Council (SAMRC): Producers guiding investment in research, development and adoption

Jenny O'Sullivan, SAMRC regional chair, Gippsland VIC

Session 5: Virtual Farm Tour

Chair: Rafe Bell, TP Jones & Co

Virtual farm tour

James Walch, Stewarton, Epping Forest TAS, Chris Headlam, Lowes Park, Woodbury TAS and Matthew Lester, Beattie Lester Beef, Lileah TAS

Session 6: Concurrent Sessions

Irrigated Pasture Updates

Chair: James Atkinson, Roberts Ltd

Realtime biomass estimation project

Tony Butler, TIA, Launceston TAS, John Francis, Holmes Sackett, Wagga Wagga NSW and Robbie Tole, Greenvale Pastoral, Cressy TAS

The cost of irrigating pasture and fodder crops

Tom Graesser, Ben Lomond Ag, Evandale TAS

Nitrogen fertiliser response of new and old perennial ryegrass cultivars

Martin Harmer, PGG Wrightson Seeds, Ballarat VIC

Finding a balance — intensive irrigation and native bush

Julian von Bibra, Beaufront, Ross TAS

Dryland Pasture Updates

Chair: Rob Winter, Heritage Seeds

Seasonal outlook for spring

Dale Grey, Agriculture Victoria, Bendigo VIC

Pasture renovation — assessment, planning and commitment

Rob Winter, Heritage Seeds, Longford TAS

Development and management of new phalaris cultivars

Richard Culvenor, CSIRO, Canberra ACT

Upskilling in pasture management

Jock Hughes, Cluden Newry Angus, Longford TAS

4.40pm Networking drinks

5.30pm Event concludes