

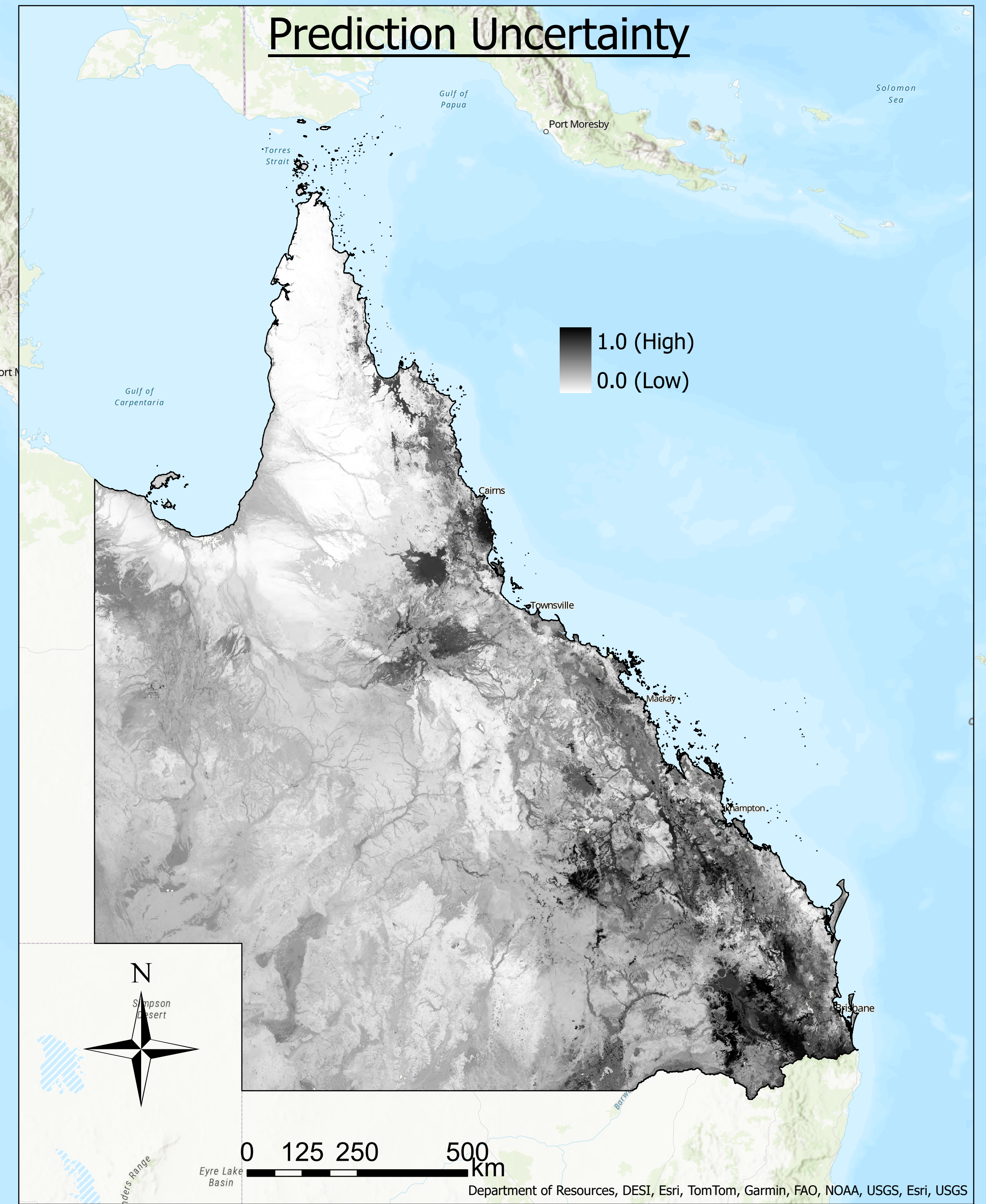
Soil Bicarbonate-extractable Phosphorus (P)

Produced by the Queensland Government
Funded by Meat and Livestock Australia Limited



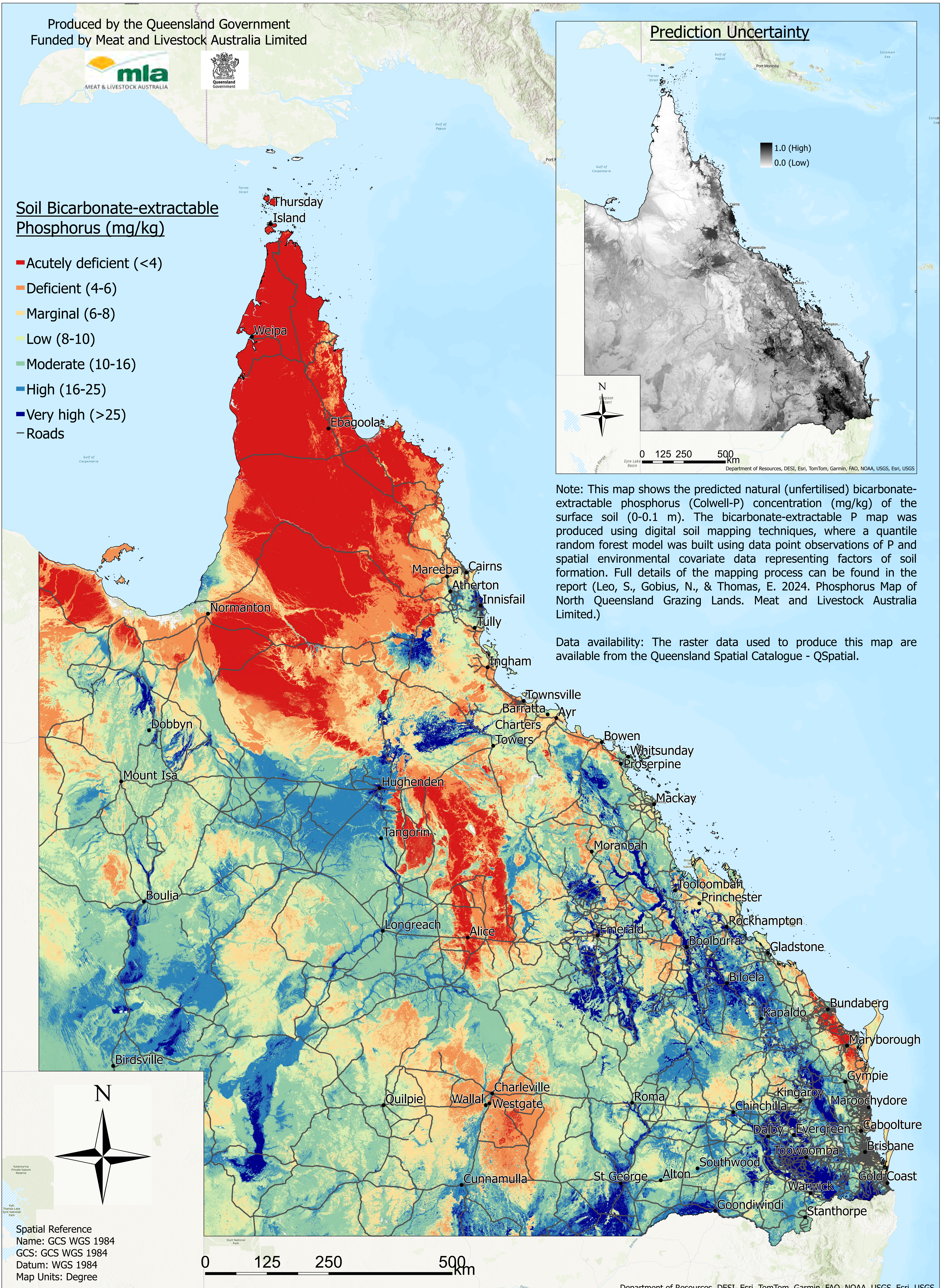
Soil Bicarbonate-extractable Phosphorus (mg/kg)

- Acutely deficient (<4)
- Deficient (4-6)
- Marginal (6-8)
- Low (8-10)
- Moderate (10-16)
- High (16-25)
- Very high (>25)
- Roads



Note: This map shows the predicted natural (unfertilised) bicarbonate-extractable phosphorus (Colwell-P) concentration (mg/kg) of the surface soil (0-0.1 m). The bicarbonate-extractable P map was produced using digital soil mapping techniques, where a quantile random forest model was built using data point observations of P and spatial environmental covariate data representing factors of soil formation. Full details of the mapping process can be found in the report (Leo, S., Gobius, N., & Thomas, E. 2024. Phosphorus Map of North Queensland Grazing Lands. Meat and Livestock Australia Limited.)

Data availability: The raster data used to produce this map are available from the Queensland Spatial Catalogue - QSpatial.



Spatial Reference
Name: GCS WGS 1984
GCS: GCS WGS 1984
Datum: WGS 1984
Map Units: Degree