

# final report

Project Code: SCSB.064  
Prepared by: Bruce Hancock  
Rura Solutions| SA Livestock Systems Alliance  
Date published: February 2006  
ISBN: 1 74036 843 6

PUBLISHED BY  
Meat and Livestock Australia Limited  
Locked Bag 991  
NORTH SYDNEY NSW 2059

## **Australian Lamb Finishers Scoping Workshop**

Meat & Livestock Australia acknowledges the matching funds provided by the Australian Government to support the research and development detailed in this publication.

This publication is published by Meat & Livestock Australia Limited ABN 39 081 678 364 (MLA). Care is taken to ensure the accuracy of the information contained in this publication. However MLA cannot accept responsibility for the accuracy or completeness of the information or opinions contained in the publication. You should make your own enquiries before making decisions concerning your interests. Reproduction in whole or in part of this publication is prohibited without prior written consent of MLA.

### Abstract

On being approached by keen and enthusiastic Lamb feedlotter to work more closely on a united program, Meat & Livestock Australia (MLA) facilitated a **“Scoping workshop of Australian Lamb Feedlotter”** on Monday 30th and Tuesday 31st January, 2006, in Adelaide.

The purpose of this workshop was to define the need for an ongoing forum/group/team, and determine if Australian Lamb Feedlotter share the interest, passion and desire to make a strategic and operational contribution to the development of this emerging production sector of the Australian lamb and sheepmeat industry

The workshop also focused on the broader issues that influence investment in, and regulation (ie National Code of Practice) of lamb feeding systems. These areas include but were not limited to:

- Environmental impacts
- Design and site location
- Animal health and welfare
- Nutrition, lamb growth & feed conversion
- Selection of animals (incl genetics)
- Supply chain management; and Product integrity

### Objectives

By the end of the workshop, participants will have, if desired:

- Defined the need for an ongoing forum/group, and hence the purpose of getting organised
- Identified key roles and responsibilities
- Identified possible structures and method of operation
- Gained consensus on the most appropriate structure
- Identified what resources are required and how they may be obtained
- Prioritised desirable Research, Development & Adoption based on current knowledge.

for a “lamb feedlotter group/network” to make a valued and constructive contribution to the professional development of the lamb feedlotting sector of the Australian Lamb and sheepmeat Industry.

## Executive Summary

The participants of the workshop agreed to establish an industry working group as “an alliance with Sheepmeat Council of Australia.”

The working group will have representation from each state and will develop a proposal of appropriate structure, charter and lines of communication for SCA consideration at their February 2006 meeting. Although still to be confirmed, SCA would plan to provide the secretariat, support and guidance for the formation and operation of the working group.

Immediate priorities have been agreed and include a code of practice and guidelines around animal health, welfare and environment; and nutrition.

MLA committed to ongoing R&D consultation with the sector and will host an R&D forum to outline current initiatives and expose them to the human resources already engage to work in this area. MLA will also seek a joint input from SCA and this working group on the development, guidance and communication of R&D in “lamb finishing”.

Delegates were elected from participating states and include:

Victoria:	Hamish MacKinnon
South Australia:	Kelvin Westbrook, Wayne Hawkins (proxy)
New South Wales:	James Conner (interim)
Queensland:	Felicity Bartlett
Western Australia:	TBA (Craig Heggerton confirmed, 17 Feb'06)
Tasmania:	To be explored by SCA

Tasks of the delegates are to:

- identify stakeholders (producers, processors, service providers, DPI's)
- engage those with key roles
- seek their interest and commitment
- identify their priorities
- develop the structure & charter in consultation with SCA.

Their initial focus is on Lamb Feedlotters, but in the long term they may seek to involve all intensive lamb finishers (eg. Irrigators, fodder crops, lucerne, etc.)

It was agreed that the name of this collection of interests is better called;

***“Australian Lamb Finishers”.***

## Contents

	Page
<b>1 Background</b>	<b>5</b>
<b>2 Project Objectives</b>	<b>7</b>
2.1 2006 Scoping Workshop	7
<b>3 Methodology</b>	<b>7</b>
3.1 Workshop	7
<b>4 Results and Discussion</b>	<b>8</b>
4.1 Results and Discussion	8
<b>5 Stakeholder Analysis</b>	<b>13</b>
<b>6 Research &amp; Development</b>	<b>14</b>
6.1 Priorities	14
<b>7 Impact on Meat and Livestock Industry</b>	<b>17</b>
<b>8 Conclusions and Recommendations</b>	<b>17</b>
<b>9 Bibliography</b>	<b>17</b>
<b>10 Appendices</b>	<b>18</b>

### 1 Background

In October 2003, MLA hosted the Sheep Confinement Feeding Systems workshop involving scientists, industry consultants, regulators & producers to identify issues, possible constraints and gaps in current knowledge for the management of sheep confinement feeding systems nationally, in order that research and development or the consolidation and dissemination of current information may occur.

On completion of the workshop, participants had:

- increased their awareness of the current operation and environment for sheep confinement feeding systems;
- identified gaps in current knowledge and determined potential impacts;
- identified and prioritised research and development needed;
- provided feedback on the Draft Victorian Code of Practice; and
- agreed on the next steps required.

After considerable discussion, the working definition for a sheep confinement feeding system was agreed as:

*“A sheep confinement feeding system is a feeding program in a confined area, where all or the majority of feed and water are supplied to sheep for production or maintenance.”*

It was further agreed that two systems should be recognised:

- Production system:
  - set up as an economic finishing operation;
  - where product is sold to specifications; and
  - where value is added to the product.
- Maintenance system:
  - set up to conserve resource bases;
  - where product is not directly sold; and
  - with a focus on risk management for the basic product.

In terms of actions, it was agreed that:

- The outcomes from the workshop will be compiled and forwarded to MLA, AWI and the attendees.
- The Workshop Report will be circulated to industry for feedback.
- MLA and AWI will:
  - test the fit with existing industry programs;
  - look for new programs arising from the recommendations;
  - seek to develop a joint action plan on the priorities identified.
  - initiate consultation with GRDC (eg: through the Premium Grains Program) and seek joint opportunities.
  - initiate discussions and consultation with:
    - the Sheep CRC;
    - State Departments of Agriculture.

## Australian Lamb Finishers Scoping Workshop

---

During 2004, MLA continued its whole of supply chain and on-farm R&D through initiatives like “Management Solutions” which involved investigation along the whole supply chain exploring genetics by environment interactions under specific management regimes.

MLA commenced its R&D program specifically focussed on lamb finishing systems in 2005 with a:

- Stocktake of Lamb feedlots
- Review of the Nutrition & Code of Practice/guidelines advice
- Review and further development of economic analysis tools

MLA remains committed to the further development, guidance and communication of R&D in “lamb finishing”.

Producers who attended the workshop in 2003, MLA and the Sheepmeat Council of Australia all felt the need for an “advisory/industry group” for the issues specific to this sector, the result being on-going discussions in 2004 and early 2005 and this scoping workshop in early 2006.

## 2 Project Objectives

### 2.1 2006 Scoping Workshop

---

The purpose of this workshop was to define the need for an ongoing forum/group/team, and determine if Australian Lamb Feedlotters share the interest, passion and desire to make a strategic and operational contribution to the development of this emerging production sector of the Australian lamb and sheepmeat industry

The workshop also focused on the broader issues that will influence investment in, and regulation (ie National Code of Practice) of lamb feeding systems. These areas include but are not limited to:

- Environmental impacts
- Design and site location
- Animal health and welfare
- Nutrition, lamb growth & feed conversion
- Selection of animals (incl genetics)
- Supply chain management; and Product integrity

## 3 Methodology

### 3.1 Workshop

---

The following target audience were invited to attend the workshop:

Producers who were contacted for the “stocktake of lamb feedlotter survey”

Service providers were asked to distribute to their clients

The invitation was clearly marked as “inclusive to all and attendees were encouraged to seek others interest.”

Attendance (Appendix 1) was from QLD, NSW, VIC, SA & WA.

Bruce Hancock, Rural Solutions SA, was engaged to:

- organise the workshop program & venue
- distribute invites & coordinate RSVP's
- facilitate the workshop
- write a final report

# 4 Results and Discussion

## 4.1 Results and Discussion

---

### 4.1.1 Naming & terminology

It was determined that from here on in, the name to best capture the activities, role & purpose of this sector of the industry would be ***“Australian Lamb Finishers”***.

### 4.1.2 Tasks of the working group from Jan – June 2006.

Develop 1-2 page proposal of the operation of a “working group” and submit to the Sheepmeat Council of Australia in late February, 2006. Utilise the secretariat and business development services offered by SCA.

They will develop the charter, structure, human resource requirements/capacity and communication channels for activity to commence.

They will explore funding sources (members, processors, DPI's, etc...) & be a conduit of collaborators for specific R&D for the lamb finishing sector.

Initial priority areas included:

- a code of practice and guidelines around animal health, welfare and environment;
- nutrition advice.

Develop a communication mechanism to inform and engage those that share an interest:

Media release protocol (state, national, SCA)  
Identify appropriate spokesperson

State delegates to be confirmed from WA, NSW & interest sought from Tasmania (by SCA).

Within each state the delegate should:

- identify stakeholders (producers, processors, service providers, DPI's)
- develop a database of those interested
- engage those with key roles
- seek their interest and commitment
- identify their priorities
- develop the structure & charter in consultation with SCA.

Participate in an R&D forum that will outline current initiatives and introduce participants to the human resources already engaged to work in this area.

Transport Code of Practice is currently under review and individuals or groups can contact: (Peter Thornber Section Manager of Animal Welfare, Animal and Plant Health Policy, Product Integrity, Animal and Plant Health Policy, Department of Agriculture, Fisheries and Forestry, [peter.thornber@affa.gov.au](mailto:peter.thornber@affa.gov.au), (02) 6272-3925 – to talk to about circulating a copy of the COP)



Final report and 1-2 page summary to be completed by The Facilitator, Bruce Hancock.

### 4.1.3 Structure

Participants heard of 3 types of structures/groups that have some functions and roles similar to that of this new group. They included:

Alliance or association with ALFA – (WA experience to date)  
Advisory group - SA Lamb Development Team and Southern Australia Beef Research Council

An alliance with Sheepmeat Council of Australia

#### WA EXPERIENCE TO DATE – (Reg Crabb)

- Avoid duplication
- Don't market, leave to individual
- More communications, feed back, info
- Many producers(wool/crop) turning to lambs and not having a market
- Barriers to progress
- Industry alliance based
- Access to technical information (eg. WAMMCO & QLamb have good support).

Questioned necessity of a body similar to ALFA – why splinter industry?

#### ALFA MODEL (Hamish MacKinnon)

- Ability to React Quickly – SCA need to refer to SFOs
- One national voice required for quick action
- Many industry problems that need fixing quickly – efficient structure needed
- Sale age issues i.e. dentition; explanation over policy making
- SCA is widely focused, spread thinly across many issues, therefore may require specific body i.e. ALFA.
- Funded from current levy, and to work with SCA.
- MLA funds only for Research & Development.
- ALFA model to include all lamb finishers

The group then discussed “Success Factors” of ALFA

- Make decisions quickly
- Implement R&D in consultation with MLA
- National perspective – not state based
- Have large “Corporate membership”, collect own levy.
- Have critical mass and volume
- Initially focused on major export market
- Incorporated body; peak council recognised by legislation

In conjunction with this discussion, Meat & Livestock Australia's function was summarised as:

- Industry service company
- Implement marketing, R&D, Market Access
- MLA does ALFA R&D
- Wide Industry consultation – SABRAC/NABRAC, SALDT, etc...
- Policy advice from Peak Councils

## Australian Lamb Finishers Scoping Workshop

---

### Businesses Ltd BY GUARANTEE structure

- Directors Liable
- Corporations Law jurisdiction – Federal Legislation
- Reporting requirements
- Directors responsibilities
- Governance
- Set-up costs

### SALDT/SABRAC / WA Sheepmeat R&D COMMITTEE

- Advisory bodies – resolution of issues via consultation
- Non-political – well linked to industry (often SCA rep)
- Membership consists right along supply chain
- Membership voluntary
- Up to \$70-100K funding per year to function
- Seek R&D funding for local issues – Grass seeds, ARG, etc...

### SCA (Chris Groves, Vice President and Bernie O’Sullivan, Executive Director)

- Detailed draft option for an ALF Working Group (WG) to be established under the umbrella of SCA. The Working Group would discuss and progress the key issues affecting the lot feeding industry, and be integrally linked with the activities of SCA.
- (Appendix 3)

It was agreed to proceed with the formation of an alliance with Sheepmeat Council of Australia based on the following identified “strengths & constraints”.

## Australian Lamb Finishers Scoping Workshop

Strengths and constraints of forming a standalone lamb lot feeding Association were:

Strength	Constraint
Control own destiny	Time to consult and establish (maybe 1-2 years)
Maintain sharp focus on feedlot industry issues	Cost of establishment & operation of \$200K per year. An additional levy on lot feeders would likely be required to fund the Association.
National body – one voice	Variety of funding sources and conditions, ie operation vs R&D.
Identify specific R&D	Small scale compared to ALFA (Beef), lack of critical mass
Resolve industry issues	Considerable corporate governance requirements to establish, maintain and fund, together with administrative and other on-going costs
	Competition for “industry’s ear” & \$’s with SCA.
Communicate industry related issues	
Be responsive to industry issues	

Strengths and constraints of an Alliance with SCA were:

Strength	Constraint
Currently have a role (under both legislation and Red Meat MOU) to advise MLA and industry on where to spend sheepmeat levy funds, and to advise the Aust. Gov’t on levy rates	Perceived to have slow “issues response time” associated with consulting State Farm Organisations
Currently scrutinise sheepmeat R&D programs	Hasn’t always spoken with one, unified voice, eg Cormo Express
SCA would welcome interest & expertise to overview this R&D.	
There are many issues of mutual interest between SCA and lot feeders	
SCA has knowledge of industry networks & operation	
SCA’s core function is policy development and lobbying	
SCA has state representation	
SCA recognised as industry peak council in legislation and has strong relationships with the Aust. Gov’t, Opposition and the Department of Agriculture	
Legal identity already set up	
Has MOU for funding sources	
Has structure and capacity to move forward with a “Lamb Finishers Group”	

General discussion issues included:

- R&D forum with lamb finishers to establish baseline of current knowledge and R&D
- Definition of who included – Grain vs. grass
- Some states define intensive grass based systems as lot feeding i.e. Lucerne grass and finished on grain.
- AUS-MEAT language already defines lot feeding
- Export image is free range, clean and green
- Mindful of marketing image
- Use of term “finishing/finishers”
- Include all production models – don’t exclude the critical mass
- Need to define intensity for conclusion
- Confinement feeding definition has been established at 2003 workshop
- Need to be ever mindful welfare issues

## 5 Stakeholder Analysis

Participants identified the following stakeholders, their basic function and their importance to the feedlot sector.

This was a very quick session and various stakeholders should not be over sensitive to their “importance score” as no consensus was obtained on this rating.

<b>Stakeholder</b>	<b>Function</b>	<b>Importance to the feedlot sector</b>
Seedstock producer	Provides genes for lamb finishing	High
Lamb producer	Breeds the ewes and lambs	High
Lamb finisher	Meets the specifications Manage industry welfare & mngt	High
Fodder supplier	Provide feed	Medium
Supplement & Health supplier	Health, etc...	Medium
Nutrition Advisor	Advice, monitoring, benchmark	Medium
State Farm Organisation	Lobbying at state & national level	Medium
Transport industry	Welfare	medium
Livestock Agents	Supply Chain Management	High
Processors	Set specs & contracts, process, Market product, feedback	High
Lamb skin buyers	Set specs & buy	Medium
Saleyards	Trading mechanism for feeder & finished lambs. Handle times of excess volume	Medium
Consumer	Determine product specs	High
Retail	Meal prep & consumer link & promotion	High
Wholesaler	Agrigation & distribution	High
State & Federal Govt	Legislation	High
AQIS, etc	Regulation of the legislation	High
RSPCA	Animal Welfare	High
Veterinarians	Animal Health	Medium
State DPI's	Guideline development, R&D, advice, human capacity	High
State Advisory Groups	Links to Govt & producer groups	High
Producer groups	Collective learning	High
Financial institutions	Provide \$'s and industry overview	High
Meat & Livestock Australia	R&D and industry service deliverer	High
Sheepmeat Council of Australia	Peak Industry Council and role to advise on levy allocation and rates	High
Equipment suppliers	Raw materials	Medium
labour resources along SC	Mass labour requirement	High

## 6 Research & Development

### 6.1 Priorities

---

#### 6.1.1 Highest Priority

Development of a **“National Code of Practice and associated guidelines”** for the operation of lamb finishing systems to:

- demonstrate professionalism of industry
- provide assistance in on-going development
- develop a sound environment and welfare position

These guidelines would have extensive producer involvement in their development and would include components of:

#### **Animal Welfare & Health (17 votes)**

Consistent set (across nation) of guidelines and rules for self regulation & best practice.

Focus on healthy clean lambs as the outcome

Curfews

Heat Stress

Producer & consumer education (2 votes)

#### **Environment (14 votes)**

Guidelines that are consistent across states and where appropriate between species, but must clearly address specific sheep issues.

Odour and effluent, Contamination of soil, water & air (1 vote)

#### **Design (1 vote)**

Collect together, the best current information (to reduce time & cost of “trial and error”)

Shade, density, feeders, waterers, mob size, facility design (1 vote)

Flexibility of design

#### 6.1.2 Second Highest Priority

#### **Nutrition, growth and feed conversion (10 votes)**

Nutritional advice – shortage of key trusted advisers

Produce a best practice manual

Produce ration formulation and economics tools

On-going, viable, industry driven R&D (4 votes)

National database of trial results (2 votes)

Cost effective evaluation

#### 6.1.3 Third Highest Priority

#### **Supply Chain Management and Product Integrity**

Communication & feedback (4 votes)

Maintain the market focus (6 votes)

Consistency of product from various finishing systems

Traceability, sheep and electronic ID (2 votes)

Investigate successful supply chains

### 6.1.4 Fourth Highest Priority

#### **Lamb selection, genetics & growth path (2 votes)**

Inferior lambs identified (grass seeds, from fine wool ewes), Identify superior genetics

More genetic information (consumer driven) when purchasing.

Benchmarking

Mature body size – consider labour requirement to handle mature adults.

#### **State Based Delegates, Actions & issues discussed were:**

##### TAS

- SCA to assist in exploration

##### QLD

- **Felicity Bartlett**
- COP
- Open lines of communication
- 6-7 Growers
- Meet before 27/2

##### NSW

- **James Connor (interim)**
- Short list to meet within 3 weeks to identify issues
- Geoff Duddy to coordinate

##### VIC

- **Hamish MacKinnon**
- Future plan
- Charter for working group
- Use DPI to gather growers together and coordinate

##### SA

- **Kelvin Westbrook**, Wayne Hawkins proxy
- Promotion of new group
- Include SALDT, Meet with growers after 27/2 meeting
- Guidelines/COP

##### WA

- No Appointment (TBA)
- Travel Commitments of rep role
- Large work load
- Consensus difficult with large group of producers
- COP
- Communications difficult due to size of area covered
- R&D meeting 17/2
  - Appoint delegate (Craig Heggerton)
  - Outline issues

### 6.1.5 Vision for the industry

Participants were asked to describe the key characteristics of the 3 key sectors of the Australian Lamb Industry in 2010.

### 6.1.6 On-Farm

Innovation in the management of the shortage of skilled labour.  
More skill in producers & service providers  
Increase in second cross & composite lamb production systems  
Continued shortage of ewe breeding numbers  
Consistency of profit and greater security  
20% increase in production  
Increase fertility rates  
More efficient use of limited resources – water, feed, labour.  
MSA for sheep involving SMEQ  
Grass seed issue addressed  
Increasing genetic potential  
Seamless Code of practice & guidelines involving best practice animal welfare & environmental mngt.  
Sustainability  
A peak body representing the lamb finishing sector (not feedlotters)

### 6.1.7 Processing

Product integrity  
Consistency of quality & supply (more kill space)  
Better feedback – automatic to finishers and producers and seedstock  
- including SMEQ  
Common description language – revisit use of AUSMEAT  
Greater use of robotics  
More supply chain development – use of forward contracts  
Market premiums for grainfed lamb  
Lamb feedback based on Omega 3, Iron, Zinc, Vitamins, etc...  
Age of lamb explored again, dentition – 2 & 4 tooth.

### 6.1.8 Retail & Consumer

More value added, pre-prepared, value added products  
Innovation in packaging for longer life  
Individual cut marketing as opposed to carcass marketing  
More precise product differentiation to match market segmentation  
Lamb positioned as premium consumer choice – high quality, value.  
Truth in labelling (lamb, hogget, etc...)  
Product recognition of grainfed lamb  
Product marketing focused at young people.



## 7 Impact on Meat and Livestock Industry

The operation of a “lamb finishing working group” aligned to Sheepmeat Council of Australia will:

- Ensure the development of an industry owned Code of Practices and associated guidelines.
- Nutritional advice is rationalised.
- R&D for the sector is targeted and focused
- Commercialisation and adoption is addressed at the commencement of R&D
- Greater industry ownership of R&D and commitment to implement
- A united industry voice
- Rapid response to industry issues

## 8 Conclusions and Recommendations

This was a very successful workshop of people from across all industry sectors and states.

All shared a common passion to have a united approach to the development, guidance and communication of R&D.

There was a strong desire to generate and participate in action ASAP.

There was overwhelming resolve to work in conjunction with SCA to develop a working group / alliance.

## 9 Bibliography

### **Sheep Confinement Feeding Systems National Workshop Outcomes**

MLA Project Number SCSB.047, October, 2003

Lamb Feedlot Stocktake, January, 2006 (condensed version of results tabled at workshop)

## **10 Appendices**

### **Appendix 1- Participant list**

Noel Evans	Bernie O'Sullivan	Kelvin Westbrook	APOLOGIES
Philip Seletto	Chris Groves	Geoff Duddy	
Hamish MacKinnon	Jeff Murray	Bruce Hancock	Adrian Webster
Wayne Hawkins	Chris & Felicity Bartlett	Rob Banks	Ed Riggall
Chris O'Neil	Helen & Neil McDonald	Mark Spurr	Rob Davidson, WAMMCO
Eddie Morgan	Craig Turner	Peter Milliken	Kevin Thompson
Ian McFarland	Lee Braun	Blair Brice	Charles Koch
Reg Crabb	Mick Quinlivan	Gerald Martin	Scott Boyle
Dale Cameron	Colin Baldock	San Jolly	Ian Feldtmann, SCA
James Conner	John Fraser	Joe Scammell	Stuart & Pru Barkla
	Richard & Perry Gunner		David Head

## Appendix 2 – Program

### Monday 30 January 2006

2:05 – 3:00pm Participants arrive

3:30pm

#### **Introduction**

- Welcome
- Purpose
- Program

#### **The lamb industry and its production systems in 2010 Current Lamb Feedlotting Issues**

5:00pm

#### **A short break & refresh**

5:15pm

#### **Identify all stakeholders in lamb feedlotting**

**(contribution & importance & relationship & ability to drive)**

6:00pm

#### **MLA's developing Lamb Feedlotting Portfolio (Rob Banks)**

Current Stocktake of Industry practice – Gerald Martin

Review of nutrition advice – San Jolly

Economic Analysis tool for feed-lotting – Geoff Duddy

7:00pm

#### **Dinner - Getting to know each other better, sharing experiences**

### Tuesday, 31 January 2006

7:00am

#### **Breakfast & more getting to know**

8:00am

#### **Review – where we got to yesterday & how its feels?**

8:15am

#### **Roles and responsibilities of a lamb feedlotters group /network**

**Develop a check-list of key features & resources possibly required** (Joined by the following to make a valued contribution to structure discussions).

8:30am

#### **Possible structures to achieve these outcomes (15 mins each)**

- **Alliance or association with ALFA – (TBC)**
- **SA Lamb Development Team – Andrew Seedsman / Heidi Schuster (TBC)**
- **An alliance with Sheepmeat Council of Australia – Chris Groves & Bernie O'Sullivan, SCA**

9:30am

What human & financial resources are really required?

10:00am

#### **Morning tea (joined by above)**

10:30am

#### **Confirmation of best structure with current knowledge**

Strengths & weaknesses of morning's proposals

\$\$'s to resource each option

## Australian Lamb Finishers Scoping Workshop

---

	Further action or clarification beyond this workshop A vote on best option (2 at most) (with /without modifications). <i>Action to bring structure to fruition</i>
12:00pm	<b>Lunch</b>
12:45pm	Identify key strategy areas (< 5) for the group, desired outcome & actions
2:00pm	<b>Where to from here?</b> <ul style="list-style-type: none"><li>• Formation of “Leadership Group”</li><li>• What, where, by whom and when?</li></ul>
3:15pm	<b>Concluding comments</b>
3:30pm	Finish

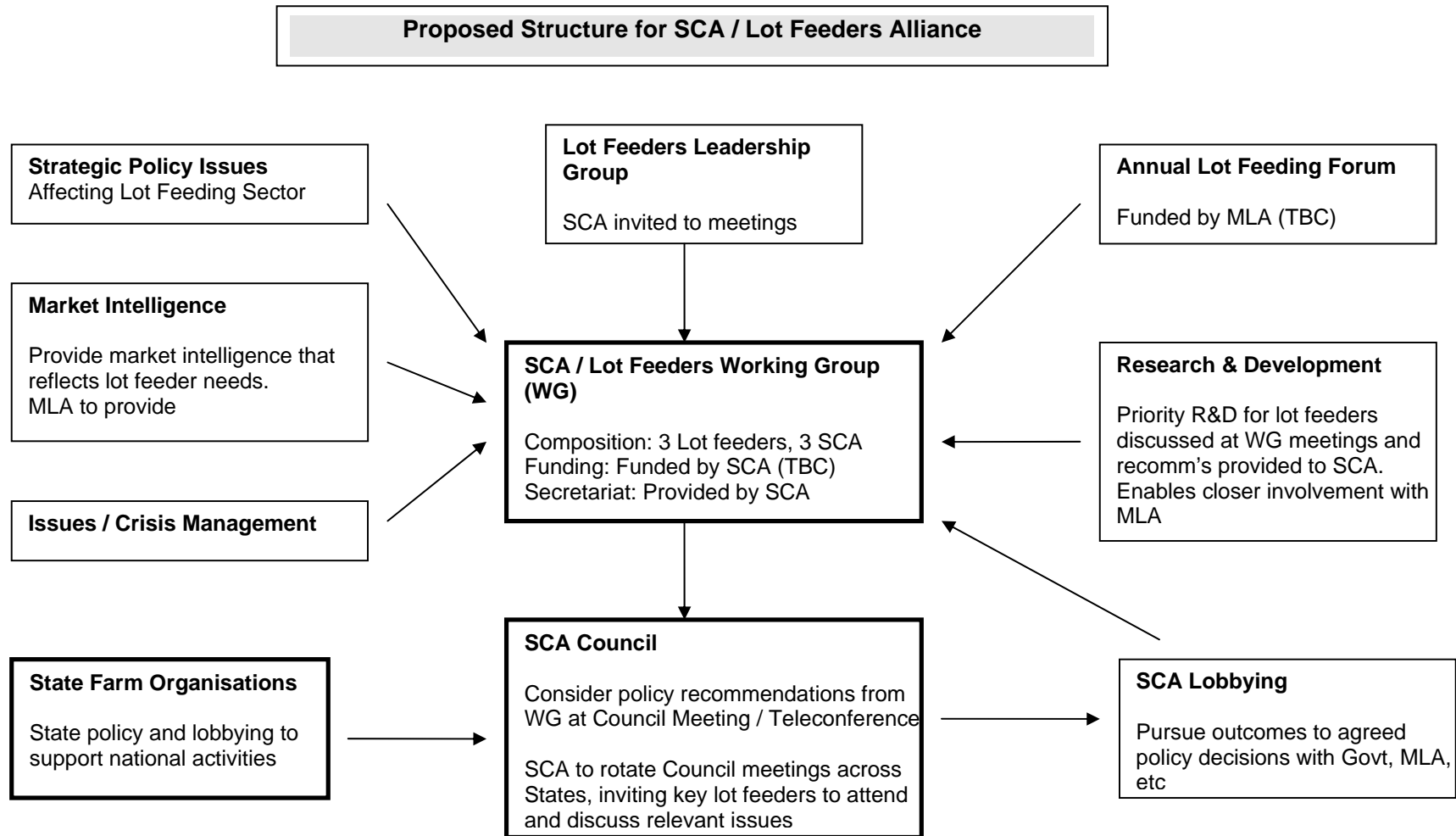
### Appendix 3- Alliance with SCA Proposal



## BRIEFING NOTE

### Scoping Workshop of Australian Lamb Feedlotter 30-31 January 2006

- Sheepmeat Council of Australia (SCA) is the national Peak Industry Council representing and promoting the needs of Australia's lamb and sheepmeat producers. SCA's core business is policy development and lobbying.
- The Council comprises representatives from State Farm Organisations, representing the states of NSW, VIC, QLD, SA, TAS and WA. SCA's operations are funded by voluntary contributions paid by these member organisations and income disbursements from the Red Meat Advisory Council Trust.
- **SCA would value the establishment of a close alliance with Australia's growing sheep and lamb lot feeding sector.** There are many issues of mutual interest and SCA is keen to ensure that its national policy decisions, and lobbying outcomes, reflect the specific needs of lot feeders.
- To facilitate a closer alliance, **SCA recommends the establishment of an SCA / Lot Feeders Working Group (WG) that would meet several times a year to discuss and progress the key priorities identified for the lot feeding sector.**
- Decisions from the WG would be tabled for timely discussion and resolution at SCA Council meetings or teleconferences, with participation by lot feeder representatives where relevant. SCA would then strongly pursue agreed policy decisions with Governments, MLA and other key organisations, keeping the WG informed of outcomes.
- SCA is prepared to consider funding the WG and providing the secretariat. SCA would rotate its Council meetings around Australia and invite key lot feeders to attend and contribute to targeted discussions on issues affecting the lot feeding sector.
- There are many benefits of SCA and lamb lot feeders forming an alliance, in particular:
  - Enables a strong, united and national "voice" to pursue outcomes on the key policy issues affecting the lamb industry, and more specifically, the lot feeding sector.
  - SCA is a legal entity (incorporated association) and has corporate governance procedures already well established, removing the need and cost to set up and maintain another legal entity, particularly in light of increasing corporate governance requirements
  - SCA is recognised in federal legislation and in the red meat industry Memorandum of Understanding (MOU) as the Peak Industry Council representing and promoting the needs of all lamb and sheepmeat producers across Australia. This peak national role is strongly recognised both in Australia and overseas, and especially by Commonwealth and State Governments and levy funded organisations such as Meat & Livestock Australia (MLA), Animal Health Australia and the National Residue Survey
  - SCA has a legislated responsibility to recommend sheep and lamb levy rates to the Australian Government
  - Both have a mutual interest in discussing the key strategic issues facing the lamb industry and ensuring levy funds produce outstanding lamb marketing and research and development (R&D) outcomes for the industry. As the recognised peak body, SCA sets the strategic objectives to be pursued by MLA and informs and approves their programs and budgets. A close alliance with lot feeders would further ensure the views of the sector are acknowledged and reflected in MLA's programs and budgets
  - SCA's members are the state farm organisations, whose state policy and lobbying activities fully complement the national activities of SCA.



**APPENDIX 4 – One page summary of workshop outcomes**

**Australian Lamb Finishers Scoping Workshop**

30/31 January, 2006

ADELAIDE

**Executive Summary**

The participants of the workshop agreed to establish an industry working group as “an alliance with Sheepmeat Council of Australia.”

The working group will have representation from each state and will develop a proposed structure, charter and lines of communication for discussions with SCA at their meeting in late February 2006.

Although still to be confirmed, SCA would plan to provide the secretariat, support and guidance for the formation and operation of the working group.

Once representation issues have been finalised, some immediate priorities have been agreed and include:

- a code of practice and guidelines around animal health, welfare and environment;
- consolidate nutritional advice, and further gaps identified.

MLA is committed to ongoing R&D consultation with the sector and will host an R&D forum to outline current initiatives and expose lot feeders to the human resources already engaged in this area.

Delegates were elected from participating states and include:

Victoria:	Hamish MacKinnon
South Australia:	Kelvin Westbrook, Wayne Hawkins (proxy)
New South Wales:	James Conner (interim)
Queensland:	Felicity Bartlett
Western Australia:	TBC
Tasmania:	To be explored (SCA to assist)

Tasks of the delegates are to:

- identify stakeholders (producers, processors, service providers, DPI's)
- engage those with key roles
- seek their interest and commitment
- identify their priorities
- develop appropriate structure, charter and lines of communication with SCA

Their initial focus is on Lamb Feedlotters, but in the longer term they may seek to involve all intensive lamb finishers (eg. Irrigators, fodder crops, lucerne, etc.)

It was agreed that the name of this collection of interests is better called;

**“Australian Lamb Finishers.”**

OUTCOME

## Australian Lamb Finishers Scoping Workshop

---

The operation of an “Australian Lamb Finishers” group within SCA will:

- Ensure the development of an industry owned Code of Practices (environment, health & welfare) and associated guidelines.
- Nutritional advice is rationalised.
- R&D for the sector is targeted and focused
- Greater industry ownership of R&D and a commitment to implement
- A united industry voice
- Rapid response to industry issues