

### European Union (EU-27)

#### 12-months ending June

Volume (tonnes swt)	Chilled		Frozen		Total	
	12-months ending June	Y-O-Y % chg.	12-months ending June	Y-O-Y % chg.	12-months ending June	Y-O-Y % chg.
Total	1,077	-10	2,324	-21	3,401	-18
Lamb	1,077	-10	2,324	7	3,401	1
Mutton	-	-100	-	-100	-	-100

#### Calendar year-to-June

Chilled		Frozen		Total	
2023 YTD	Y-O-Y % chg.	2023 YTD	Y-O-Y % chg.	2023 YTD	Y-O-Y % chg.
583	-11	1,057	-42	1,639	-34
583	-11	1,057	-23	1,639	-19
-	-	-	-	-	-

#### Month of June

Chilled			Frozen			Total		
2023 June	M-O-M % chg.	Y-O-Y % chg.	2023 June	M-O-M % chg.	Y-O-Y % chg.	2023 June	M-O-M % chg.	Y-O-Y % chg.
25	12	-27	187	-47	-47	212	-44	-46
25	12	-27	187	-47	-47	212	-44	-46
-	-	-	-	-	-	-	-	-

### United Kingdom

#### 12-months ending June

Volume (tonnes swt)	Chilled		Frozen		Total	
	12-months ending June	Y-O-Y % chg.	12-months ending June	Y-O-Y % chg.	12-months ending June	Y-O-Y % chg.
Total	1,805	-3	7,492	-20	9,297	-18
Lamb	1,805	-3	4,836	-13	6,641	-10
Mutton	-	-	2,656	-32	2,656	-32

#### Calendar year-to-June

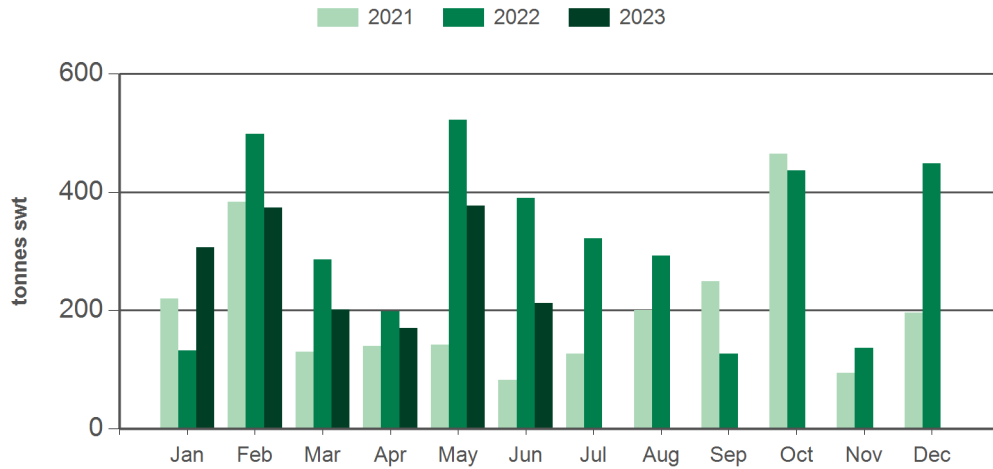
Chilled		Frozen		Total	
2023 YTD	Y-O-Y % chg.	2023 YTD	Y-O-Y % chg.	2023 YTD	Y-O-Y % chg.
1,109	25	4,080	10	5,188	13
1,109	25	2,493	8	3,602	13
-	-	1,586	14	1,586	14

#### Month of June

Chilled			Frozen			Total		
2023 June	M-O-M % chg.	Y-O-Y % chg.	2023 June	M-O-M % chg.	Y-O-Y % chg.	2023 June	M-O-M % chg.	Y-O-Y % chg.
224	43	90	951	22	266	1,175	26	211
224	43	90	463	-1	134	687	10	118
-	-	-	488	57	679	488	57	679

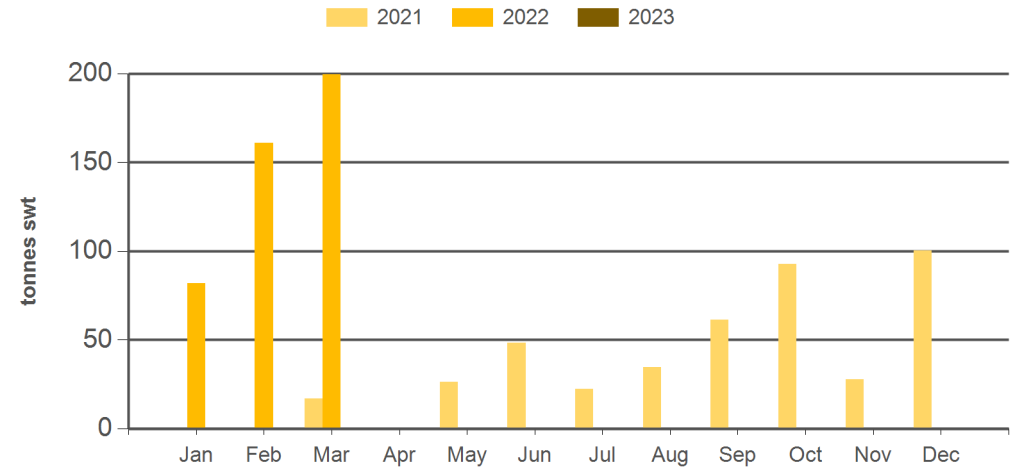
Source: DAWR. YTD = Calendar year-to-June. Y-O-Y = Year-on-year. M-O-M = Month-on-month. SWT = Shipped weight. For further information email [globalindustryinsights@mla.com.au](mailto:globalindustryinsights@mla.com.au).

#### Monthly lamb exports to the EU



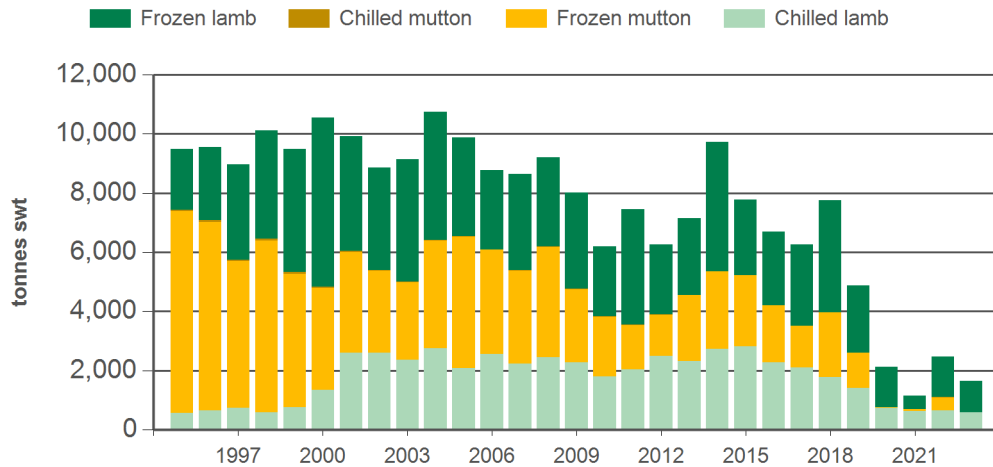
Source: DAWR, Prepared by MLA

#### Monthly mutton exports to the EU



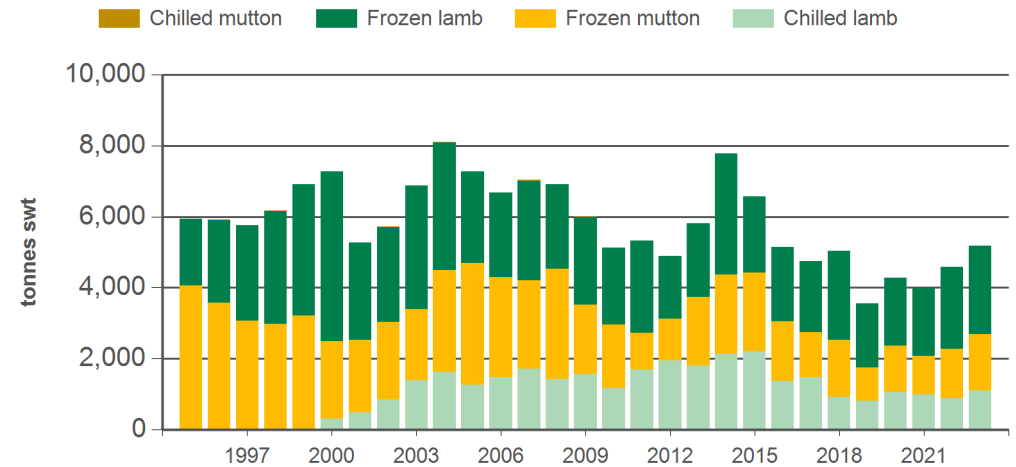
Source: DAWR, Prepared by MLA

#### Year-to-June sheepmeat exports to the EU



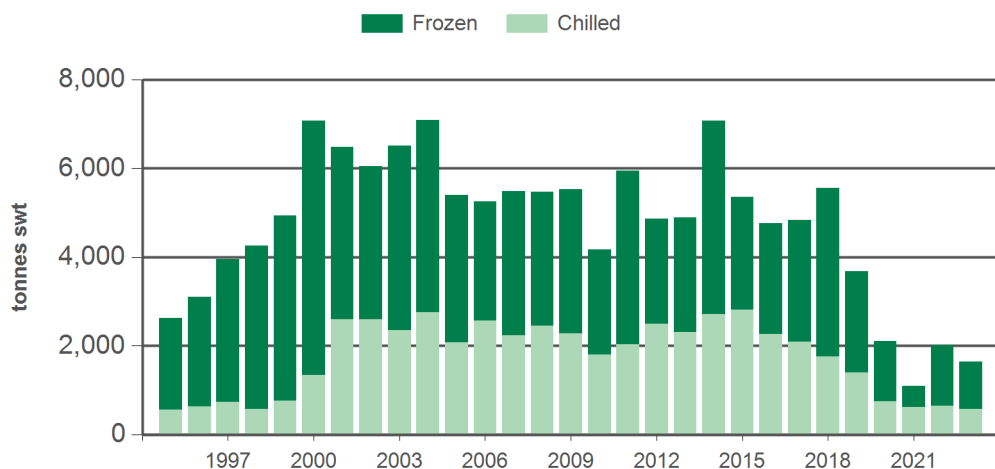
Source: DAWR, Prepared by MLA

#### Year-to-June sheepmeat exports to the UK



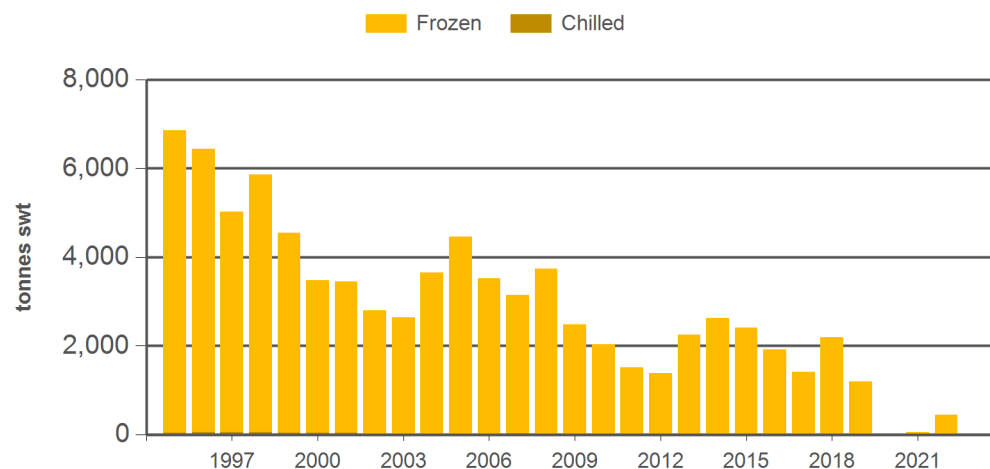
Source: DAWR, Prepared by MLA

#### Year-to-June lamb exports to the EU



Source: DAWR, Prepared by MLA

#### Year-to-June mutton exports to the EU



Source: DAWR, Prepared by MLA

#### Historical sheepmeat exports to the European Union (EU-27) - Calendar year totals

Volume (tonnes swt)	2008	2009	2010	2011	2012	2013	2014	2015	2016	2017	2018	2019	2020	2021	2022	2023 YTD	Y-O-Y % chg.
Total	19,015	19,099	16,893	16,458	15,852	16,735	18,758	16,195	16,471	15,454	15,295	7,028	4,813	2,828	4,230	1,639	-34
Lamb	11,581	13,730	11,951	12,930	12,129	11,747	14,042	10,656	11,512	10,281	10,008	5,658	4,573	2,428	3,788	1,639	-19
Mutton	7,434	5,370	4,941	3,528	3,723	4,988	4,716	5,539	4,959	5,174	5,288	1,369	240	401	442	0	-

#### Historical sheepmeat exports to the United Kingdom - Calendar year totals

Volume (tonnes swt)	2008	2009	2010	2011	2012	2013	2014	2015	2016	2017	2018	2019	2020	2021	2022	2023 YTD	Y-O-Y % chg.
Total	13,058	13,826	13,151	11,426	12,296	13,354	14,832	12,921	12,378	10,927	9,698	7,788	9,313	10,683	8,692	5,188	13
Lamb	7,104	9,384	8,754	8,780	9,016	9,124	10,561	7,806	7,950	6,567	5,691	5,616	6,388	7,091	6,236	3,602	13
Mutton	5,954	4,442	4,397	2,646	3,279	4,230	4,271	5,115	4,428	4,360	4,006	2,172	2,925	3,592	2,457	1,586	14

Source: DAWR. YTD = Calendar year-to-June. SWT = Shipped weight. For further information email [globalindustryinsights@mla.com.au](mailto:globalindustryinsights@mla.com.au).