

meatup FORUM

For the latest in red meat R&D



MLA Update

Sally Leigo

Program Manager - Adoption

Environment in which we operate

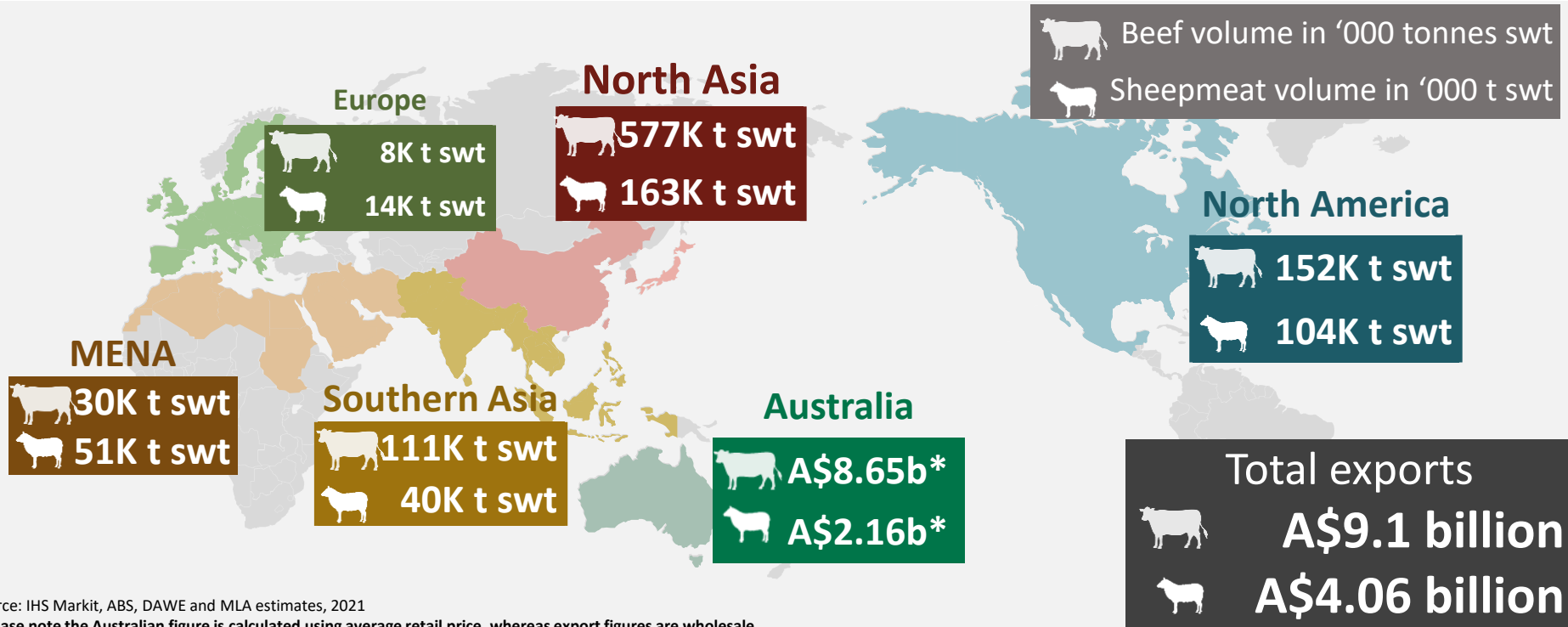
Supply chain initiatives

Problems we need to solve

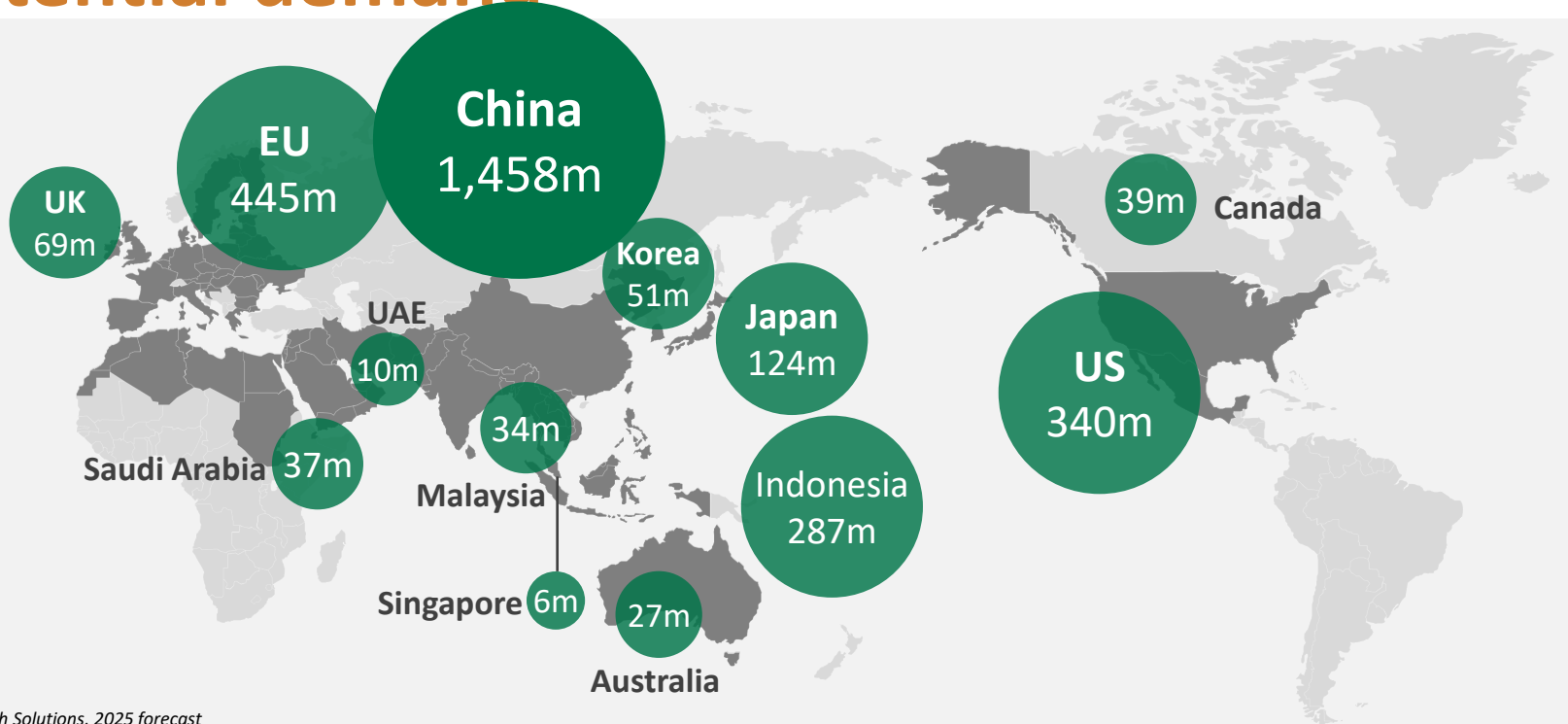


The operating environment

Australia has a diverse global portfolio



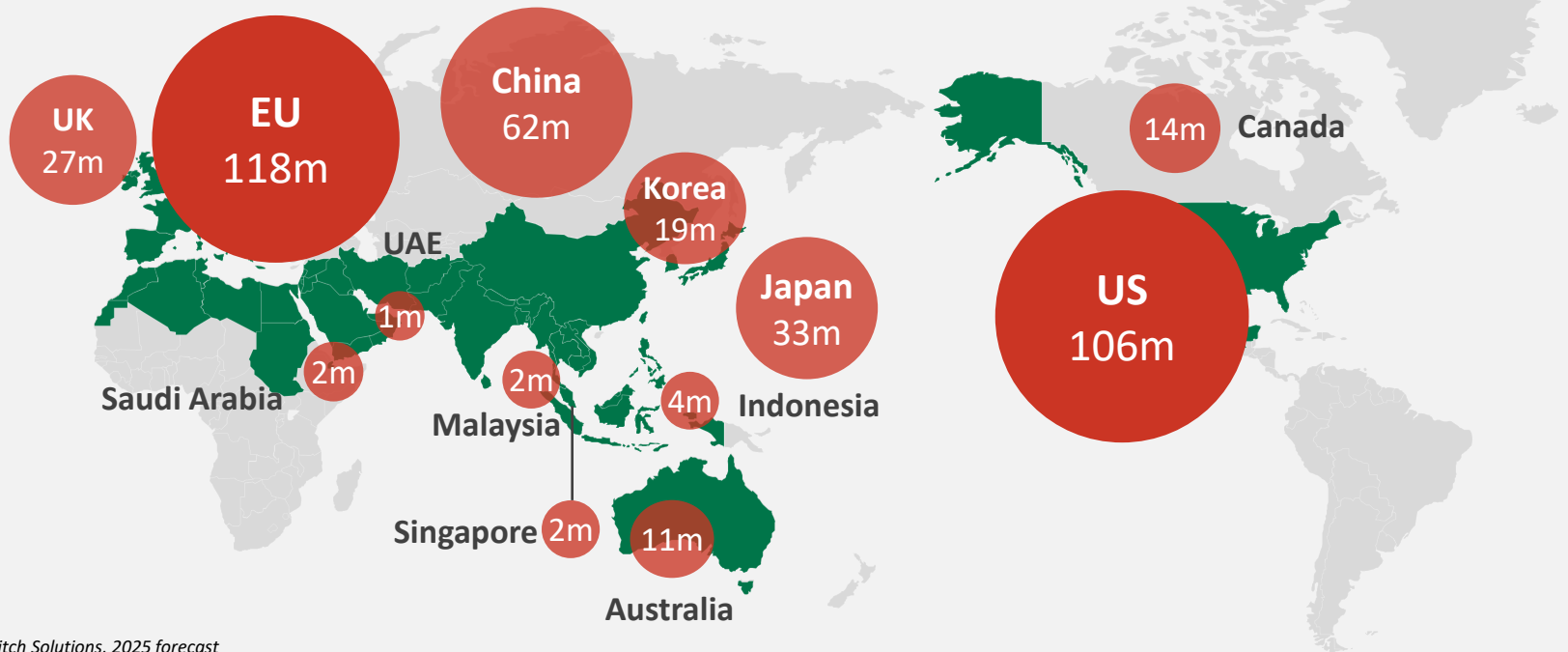
Population is traditionally used as an indicator for potential demand



Source: Fitch Solutions, 2025 forecast

However, 'ability to purchase' is a better indicator

Households earning a DISPOSABLE income above US\$35,000 (2025 forecast)



Source: Fitch Solutions, 2025 forecast

High level analysis of key retailers in international markets – focused on sustainability

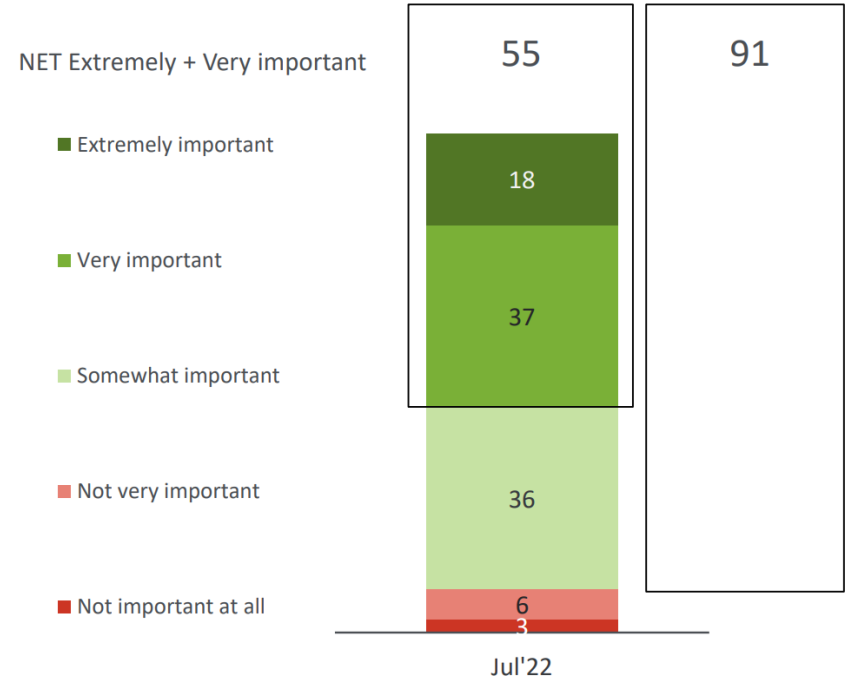
Sustainability awareness	More advanced			Emerging				
	AUS	US	UK	Japan	Korea	China	SEA	MENA
Focus areas								
Emission, GHG reduction/elimination	✓	✓	✓	✓		✓		
Carbon (Net zero, reduction)	✓	✓	✓	✓	✓		✓	
Carbon footprint			✓			✓	✓	✓
Animal welfare	✓	✓	✓					
Waste (food, packaging)	✓	✓	✓	✓	✓		✓	
Recycle	✓	✓	✓	✓	✓	✓	✓	✓
Heath & Nutrition	✓		✓	✓	✓		✓	✓
Community	✓	✓	✓	✓	✓	✓		✓
Eco-friendly			✓	✓	✓		✓	
Planting trees / deforestation			✓			✓		
External reference / certification*	✓	✓	✓					✓
	BBFAW	UNSDG	UNSDG	UNSDG GAP			UNSDG	MoCCA, UNSDG

Global market insights

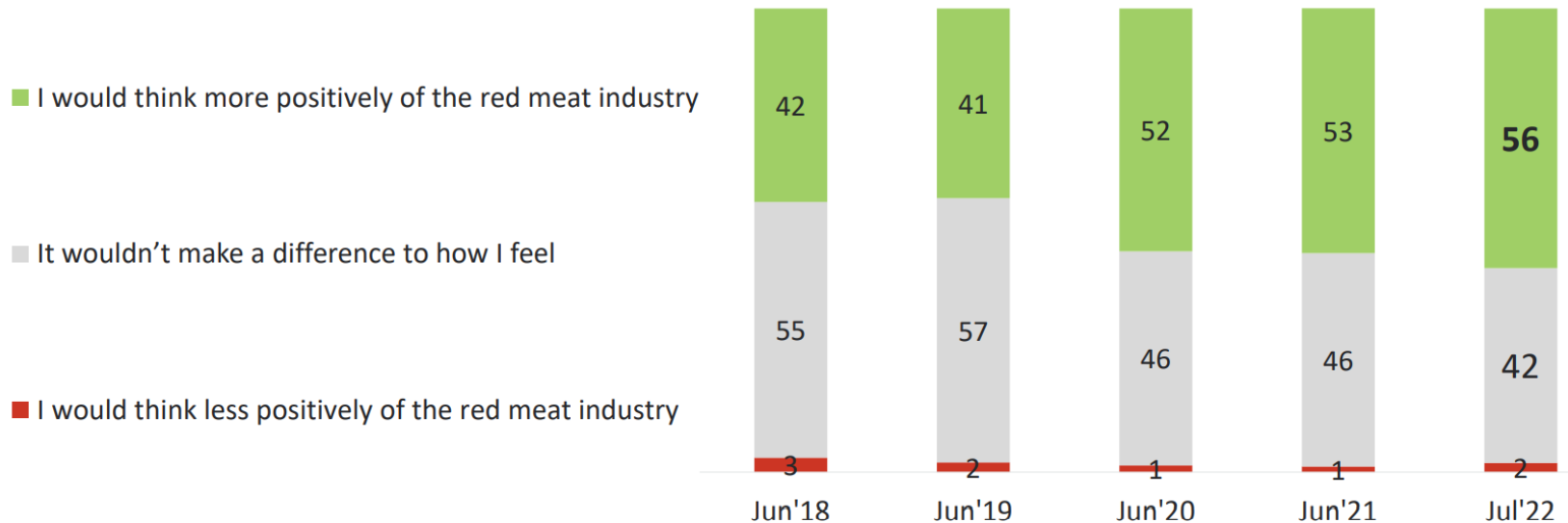
- Retailers (e.g. Tesco, WallMart, Marks & Spencers & Sainsbury's) are driving sustainability requirements based on their COP26 climate commitments.
- Consumers associated sustainability more with Australian red meat than they do with NZ or USA red meat

Sustainability is personally important to most metropolitan Australians

Personal importance of sustainability (%)



Half would feel more positive about the red meat industry if emissions were reduced to net zero by 2030.



Supply chain initiatives



Whole farm system, value chain approach linking genetics to consumer outcomes



Multi-breed genetic evaluations

- Create a southern multi-breed dataset
- Angus, Charolais, Hereford, Shorthorn, Wagyu and Brahman
- Compare irrespective of hide colour
- Build reference for hard-to-measure traits
- Enable the development of a temperate multi-breed genetic evaluation

Outcomes



2000 cows, 6 breeds,
across 5 sites.



First cohort of steers in
feedlot, ovarian scanning
heifers.



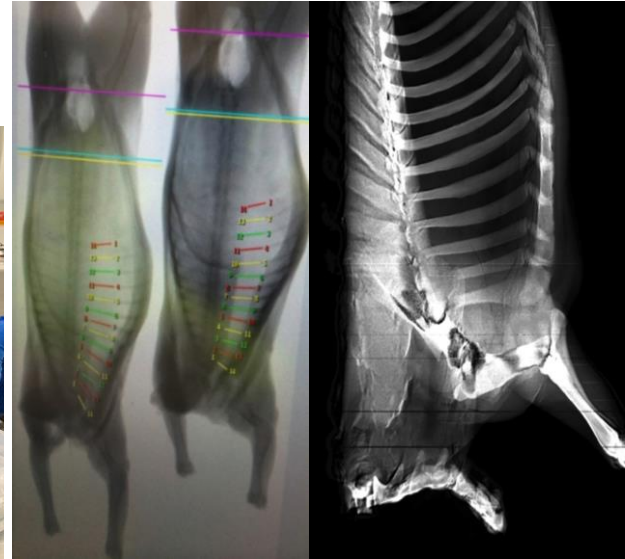
Second cohort born and
third AI program underway



All animals will be
genotyped and intensively
phenotyped.



Objective carcass measurement



Dairy beef for MSA

- MSA evaluation of 300Kg steers (Jersey, Holstein X Jersey & Holstein) grassfed & feedlot systems.
- All breeds except Jersey graded well compared to beef breeds, though marbling & fat scores were generally lower.
- All dairy steers, particularly Holstein, valuable carcase via grass or grain finishing.



Complex problems to solve



Carbon Neutral by 2030



1. Industry leadership



2. GHG emissions avoidance

- Grazing properties
- Feedlots
- Processing facilities



3. Carbon storage

- Grazing properties



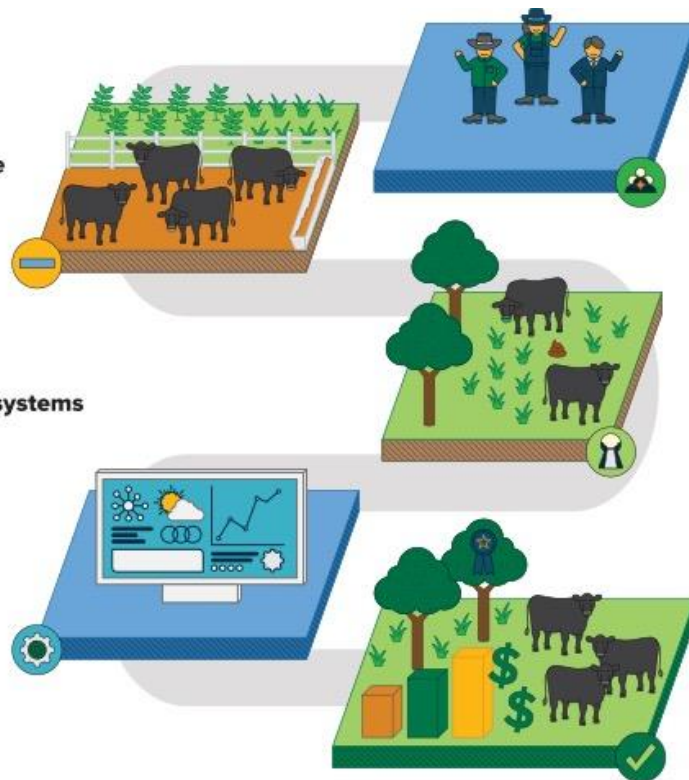
4. Integrated management systems

- Rapid adoption
- Carbon accounting
- Measurement & reporting



Multiple benefits

- Demonstrated environmental stewardship
- Increased profitability
- Increased animal productivity



CN30 industry progress

The Australian red meat industry:

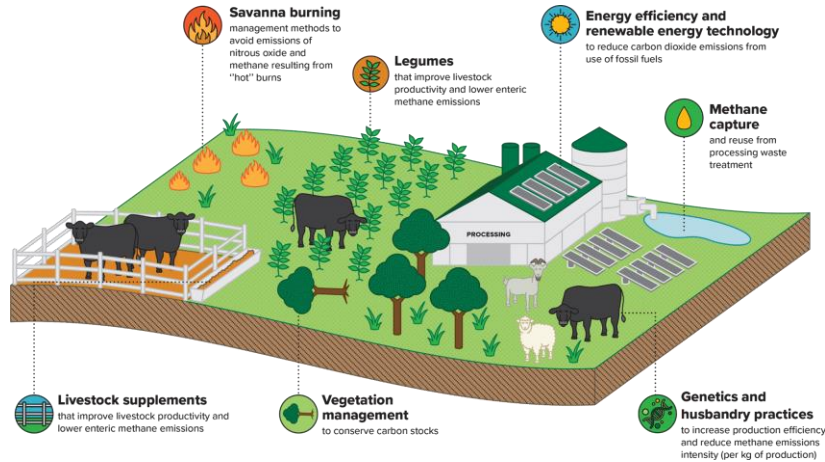
LOWERED
it's greenhouse
emissions by
59.05%
since 2005

EMITS
56.38Mt
CO₂-e per year
down from
133.36Mt CO₂-e pa

CONTRIBUTES
10.7%
of national emissions
down from
22% in 2005

CN30 resources available

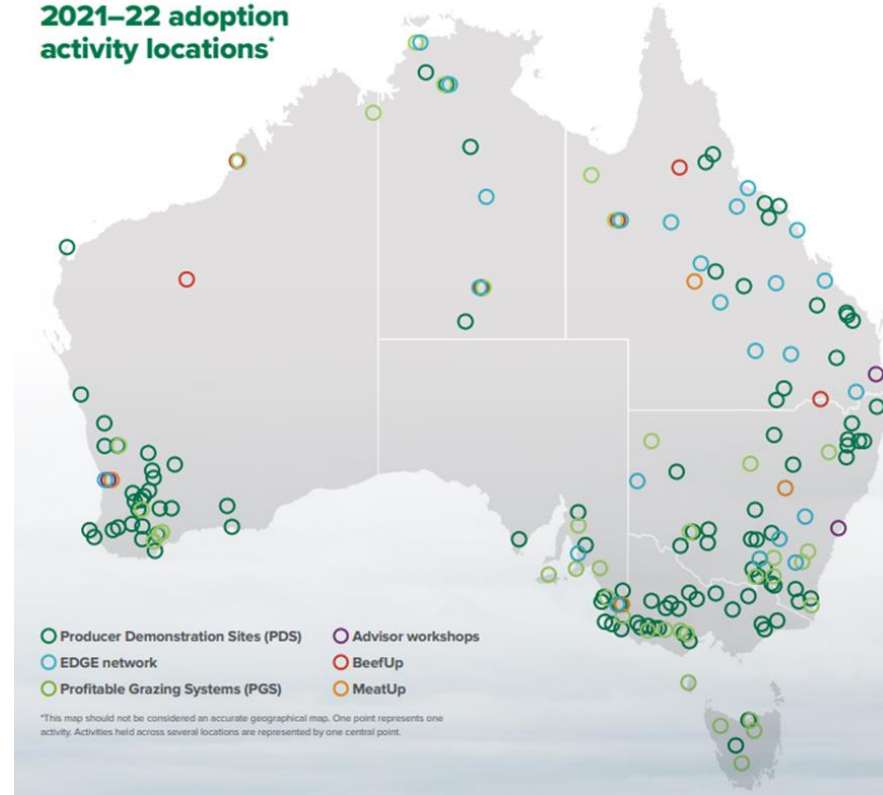
- Carbon 101 eLearning module (3 more to come)
- Carbon calculator (available for Feb)
- CarbonEDGE workshop (in development)



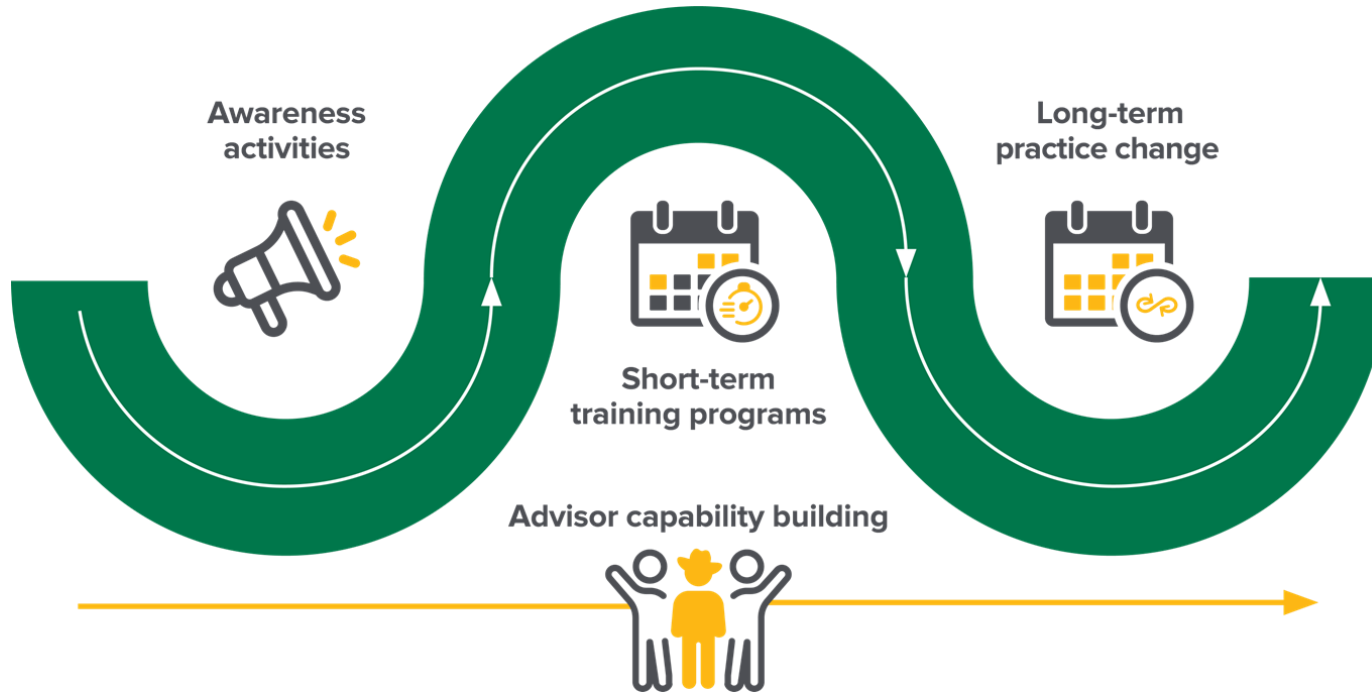
MLA's Adoption Program

- 10,709 producers engaged
- Influencing up to:
 - 11.3million Sheep
 - 7.1million Cattle
 - 210,000 Goats
 - >150million Hectares
- Participating producers benefit by \$7.83/Ha per annum.

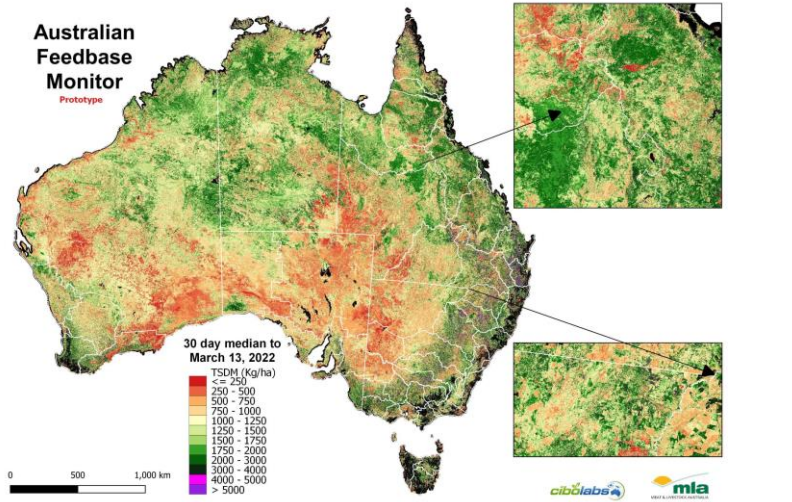
2021–22 adoption activity locations*



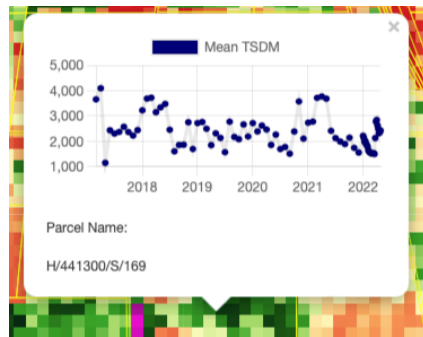
Get involved in MLA adoption programs



Australian Feedbase Monitor



- Total Standing Dry Matter (KgDM/Ha) & Groundcover (%)
- Resolution of 1Ha & updated every 5 days
- Access through myMLA platform
- Access will be linked to PIC and LPA land parcels
- Available from 30th November 2022



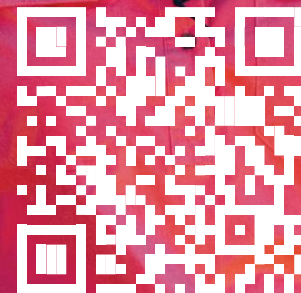
Become an MLA member today

MLA members receive:

- ✔ free subscription to MLA's regular member magazine *Feedback*
- ✔ free subscriptions to MLA's suite of e-newsletters
- ✔ the opportunity to attend and vote at MLA's Annual General Meeting
- ✔ discounts for a range of MLA products and services, ordered via the myMLA catalogue
- ✔ invitations and discounts to local MLA events
- ✔ eligibility for a range of MLA programs.

FREE
to levy-paying
red meat
producers

Sign up for **FREE** and join nearly 50,000 livestock producers by scanning the QR code or email us and we will send you the details to sign up: membership@mmla.com.au

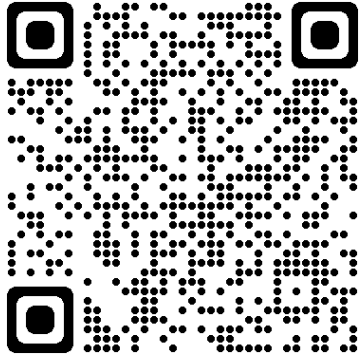


Adam and Jacynta Coffey –
Coffey Cattle Co., QLD
Members since 2018

Take home messages

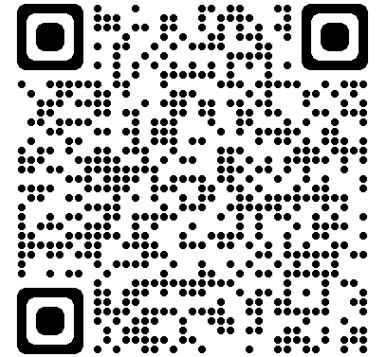
- In competitive markets (e.g. US & EU) retailers are driving a CN30 and sustainable red meat product.
- Supply chain improvements result in highest quality of Australian red meat.
- Dairy-beef can grade for MSA when managed like a beef animal.

Tools and resources



- Carbon 101 eLearning module

- Sign up to myMLA account



meatup FORUM

For the latest in red meat R&D