

# meatup FORUM

For the latest in red meat R&D

# Producing restocker cattle for existing and future markets

Alastair Rayner

RaynerAg

# Where are you focusing your attention?

- The most common characteristic of the top 25% of producers

**Focus on what they can control**

- The other common traits

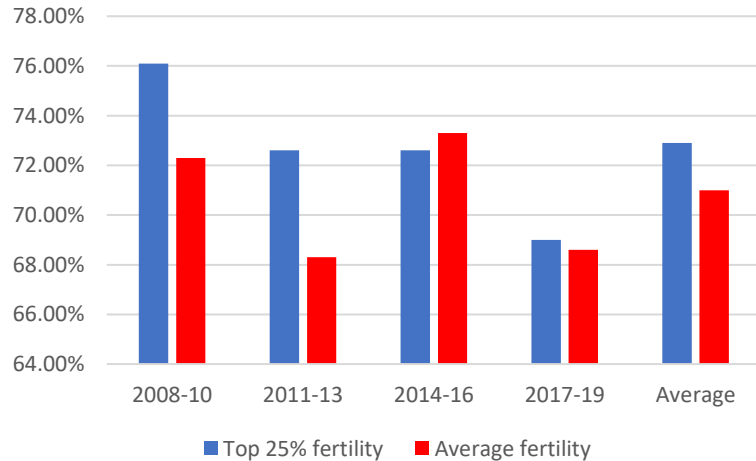
**They get simple things right**

# Profitable breeding program

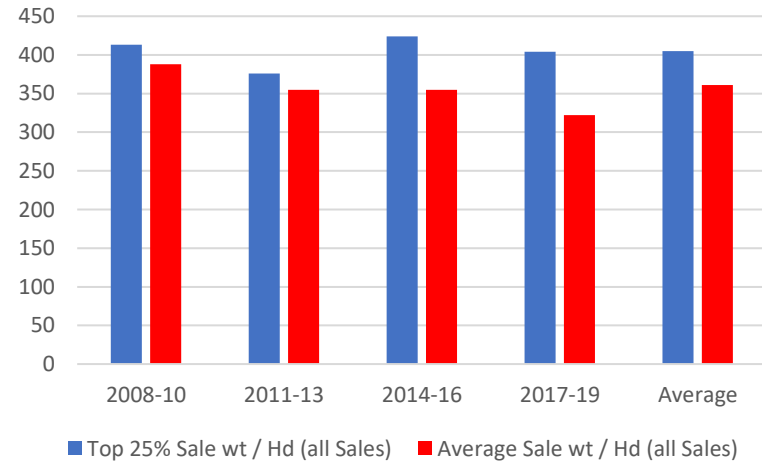
- Must have a clear breeding objective
- Have SMART goals for the business
- Focus on the traits that can be controlled within the farm
- Be clear on profit drivers

# Some points to consider

## NSW Coastal Fertility Rates

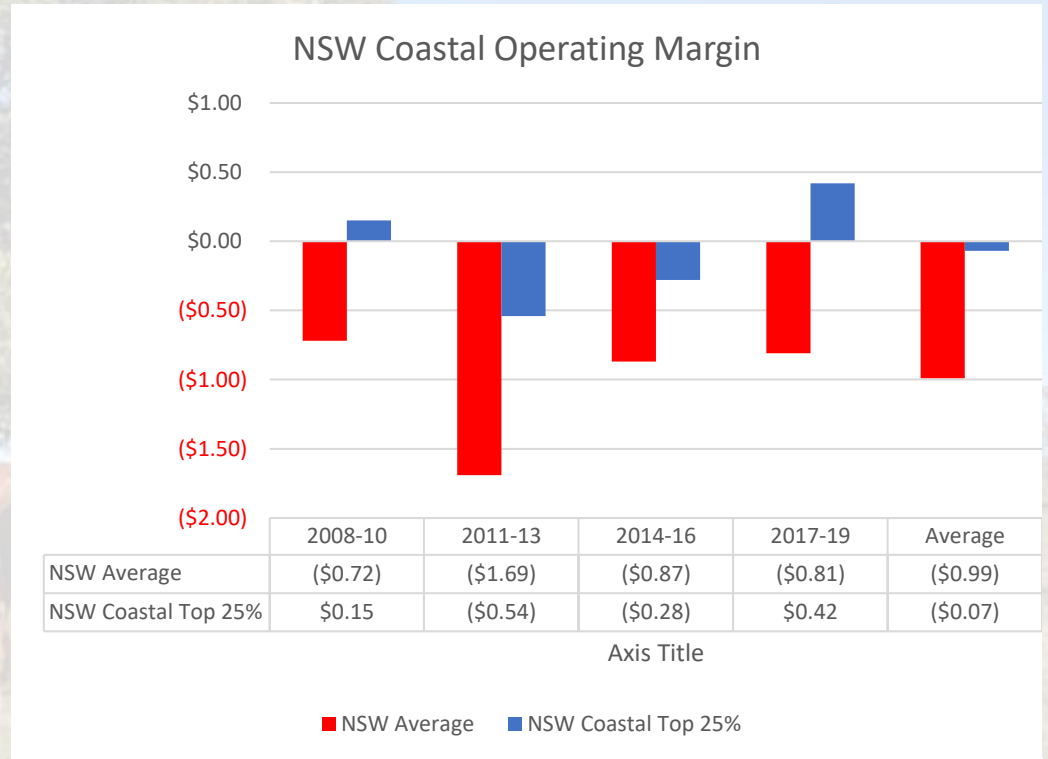


## NSW Coastal Sale Weight / Hd (all sales)



# The financial impact

- Breeding for the future starts with the basics
- Fertility
- Weaning weight/cow
- Sale weight





## Knowing the opportunities for beef producers

- Australian Beef report 2020 suggests:
  - A 5% increase in fertility = a 7% increase in income
  - A 1% decrease in mortality = 2% increase in income
- Increasing sale weight by 5% can see a 4% increase in farm income

# Finding the common profit drivers

- Weaning weight/cow
  - Annual pregnancy rate
  - Calf mortality
- 9 week joining
- Replacement retention rate



- Consistent age / weight
- Genetics to suit market specifications
- Genetics to suit environment allowing growth / finishing

Breeder

Backgrounder /  
Finisher



# Fertility & growth – what are the options?

- It is possible to select within breed
- Growth and EQ traits are highly heritable
- Weaner producers and growers/finishers can get paid

TRAIT	Range	HERITABILITY* Temperate Breeds	Tropical Breeds
<b>Fertility</b>			
Calving Interval	Low	10%	15%
Scrotal circumference (18 months)	Medium-high	35-50%	30-35%
<b>Growth</b>			
Birth weight	High	40%	40%
Weaning weight	Medium	30%	30%
Yearling weight	Medium-high	40%	NA
Mature cow weight	High	50%	> 50%
Growth Rate	Medium	30%	30%
<b>Carcase</b>			
Dressing %	Medium-high	40%	NA
Rump fat depth	Medium-high	35%	20-45%
Eye muscle area	Medium	20%	30-40%
<b>Adaptation</b>			
Eye cancer susceptibility	Medium	30%	NA
Tick resistance	Medium	NA	20-35%
Worm resistance	Medium	NA	25-30%
Buffalo fly resistance	Medium	NA	20-30%

\*Heritability estimates sourced from various publications  
NA – either not available or not applicable

# The environmental effect

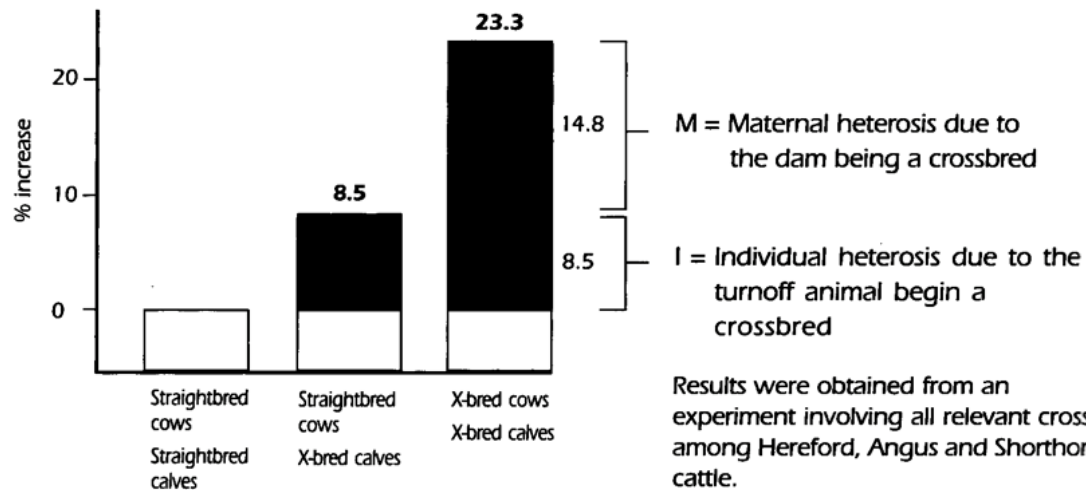
- The north coast is a challenging environment
- Tropical and native pastures create larger feed gaps
- Environmental impacts of temperature & humidity
- Associated effects such as Buffalo Fly

# Using hybrid vigor – crossbreeding for success

- Well designed crossbreeding systems offer significant advantages
- Heterosis is greatest on the least heritable traits
  - Reproduction
  - Survival
  - Longevity
- Modest effects on
  - Direct and maternal weaning
  - Post weaning weight gain

# Heterosis and weaning weight/cow joined

- Heterosis offers significant lifts for breeders
- The increases continue for growers/finishers

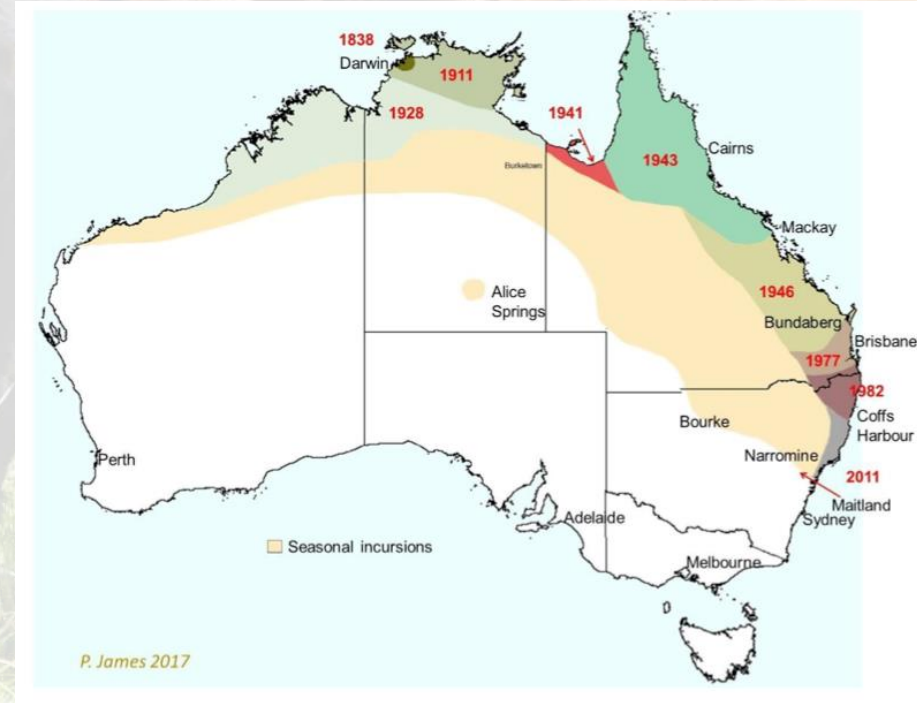


# Using adaption

- Resistance to buffalo fly is worth selecting for
- Flyboss data shows up to 16% reduction in liveweight gain
- Qld research suggests average loss through buffalo fly as 15kg over 100 days
- Additional impact on milk production (dairy production up to 0.5L/day)

# Where do your weaners go?

- Buffalo fly are not just a “coastal issue”
- Buffalo fly are spreading inland and south impacting new areas
- Resistance will help restockers & finishers avoid growth setbacks



# What about eating quality?

- There are breed impacts on eating quality
- *Bos indicus* content does impact MSA Index scores through Hump Height
- However - the impact needs to be factored across the production system
- Consider what the MSA index payment is and what other tools can be used/selected for

# Focus on what you can control

Carcase Input	Size of effect on the MSA Index (units)
HGP Status	-5
Milk-fed Vealer	4
Saleyard	-5
MSA Marbling	0.15
Hump Height	-0.7
Ossification	-0.6
Rib Fat	0.1
Hot Standard Carcase Weight	0.01
Gender	0.3



# Focus on what you can control

Carcase Input	Size of effect on the MSA Index (units)	Relative Importance
HGP Status	-5	Very High
Milk-fed Vealer	4	Very High
Saleyard	-5	Very High
MSA Marbling	0.15	High
Hump Height	-0.7	High
Ossification	-0.6	High
Rib Fat	0.1	Medium
Hot Standard Carcase Weight	0.01	Low
Gender	0.3	Low

# Black baldy trial results

- Hereford x Angus steers were 4.1% heavier at weaning
- Hereford x Angus steers HSCW was 4.1% heavier
- Angus steers had an MSA Index of 62
- Hereford steers had an MSA Index of 61.5
- To overcome the additional value of HSCW – Angus steers need to attract a 4.1% premium to overcome this advantage

# Know what the payments are

- Most indexes are achievable –with F1 or F2 cattle
- What are the index drivers that can be used to complement your system?

GRADE	FAT	TEETH	PRICE												
			440+	420+	400+	350+	330+	300+	260+	240+	220+	200+	180+	150+	100+
<b>MSA &amp; PREMIUM</b>															
<b>MVNB</b> Antibiotic Free MSA Index 54.5+	5 - 32	0-4			8.20	8.20	8.20	<b>8.20</b>	8.20	8.20	7.90	7.90			
	33 - 39				8.05	8.05	8.05	8.05	8.05	8.05	7.75	7.75			
<b>MVN</b> HGP Free YG MSA Index 54.5+	5 - 32	0-2					7.80	<b>7.80</b>	7.70	7.60	7.60	7.45			
	33 - 39						7.65	7.65	7.55	7.45	7.45	7.30			
<b>MSA Blue</b> MSA Index 50.0+ HGP less 30 cents	5-32	0-4			7.70	7.70	7.70	<b>7.70</b>	7.50	7.50					
	33-39				7.50	7.50	7.50	7.50	7.30	7.30					
	5-32	5-6			7.65	7.65	7.65	7.65	7.45	7.45					
	33-39				7.45	7.45	7.45	7.45	7.25	7.25					
	5-32	7-8			7.60	7.60	7.60	7.60	7.40	7.40					
	33-39				7.40	7.40	7.40	7.40	7.20	7.20					

# Key messages

- Consider the opportunity through cross breeding
- Use of complimentary breeds to address adaptability and environmental suitability
- Select for traits that are profit drivers
- Develop a relationship with purchasers to obtain feedback

# Key management strategies

- Structure your joining (9 weeks for cow herd – 6 weeks for heifers)
- Yard wean all cattle (NSW DPI guidelines) for 7 – 10 days
- Use genetic information to select cattle
  - Days to Calving & Gestation length
  - Growth (200 – 400 – 600d)
  - Mature cow size – balance for the environment
  - Increase IMF% without compromising other traits
  - Select for temperament

# Manage your feedbase

- A key difference between average & top 25%
- Average Producers ~ 12.7kg/DSE
- Top 25% ~ 13.9kg/DSE

**Sale weight difference of 44kg/hd**

WORLD-LEADING SCIENCE, PROFITABLE

ABLE LANDSCAPES

### LOGIN or SIGN UP with myMLA Account

We've linked to myMLA as a single login point so it's easier for you to access your PICS.

Login to myMLA or Create myMLA Account:

LOGIN

SIGN UP

**QLD Floods**  
**February 10, 2019**



Welcome to myMLA

Email address

ptickle@cibolabs.com.au

Password

.....



[Forgot password?](#)

Continue

Don't have an account? [Sign up](#)

**Solutions for Agriculture**

and platform development  
systems

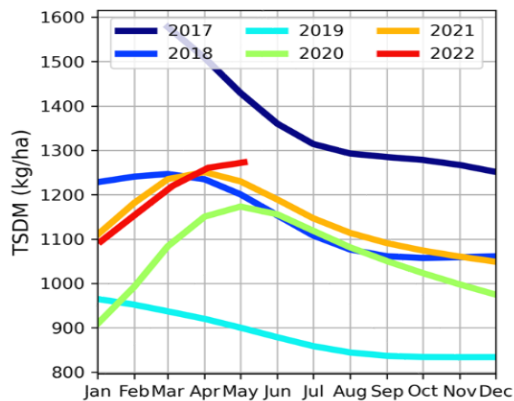
## Cibo Labs Annual TSDM comparison for 0682

**1238** kg/ha 

Last reported 2022-05-04

This time last year: 1215 kg/ha

All time average: 1150 kg/ha



[Edit Location](#)

[View Deeper Analysis](#)

### MLA Catalogue

Here are quick links to MLA's range of products and services. We've bundled them in handy categories for fast and easy access. [Need help?](#)

#### Latest promotions

MLA members can attend BeefUp Forums for \$25 (\$50 for non-members). [Not a member? Sign up now](#)

MLA members can attend Livestock Advisor Updates for \$50 (\$100 for non-members). [Not a member? Sign up now](#)

There's never been a better time to use eWool. eWools are free to use.

#### Integrity and feedback

Extension and adoption events

Sheep Genetics

Feedlot

Tools and resources

Corporate

Livestock reporting and news

Livestock exports

Global trends and market insights

#### Weather

[Edit Locations](#)

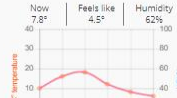
Cabarlah, QLD

4° 18°

Sunny

Chances of Rain 5% Amount < 1mm

Now 7.8° Feels like 4.5° Humidity 62%



#### Industry News



Have your say on MLA's market information

23 June

[More Industry News](#)

#### Market News



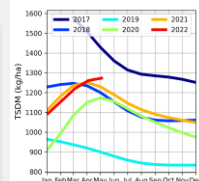
Brazil ban expected to have limited impact on Australian beef

10 September

[More Market News](#)

### Cibo Labs Annual TSDM comparison for 0682

**1238** kg/ha   
Last reported 2022-05-04  
This time last year: 1215 kg/ha  
All time average: 1150 kg/ha



[Edit Location](#)

[View Deeper Analysis](#)

#### MLA e-newsletters

Red meat news, views and advice delivered to your inbox each week.



Fostering prosperity



MEAT & LIVESTOCK AUSTRALIA

#### Resources

##### Grassfed Cattle - Northern

Publication

NB2 launch webinar through

Publication

Tips & Tools - NB2: What causes calf loss

Publication

Webinar: Feed Budgeting Webinar

More R&D

Publication

Tips & Tools - NB2: Calf losses - do I have

Publication

Tips & Tools - Could your herd be more

Case Study

Five tips to prepare for the wet season

More Tools



## Australian Feedbase Monitor

Information for producers



The Australian Feedbase Monitor is an on-farm management tool developed by Cibo Labs and MLA to support:

- improved grazing management with near real time data
- increased use of fodder budgeting across grazing enterprises and supply chains
- improved ability to manage and report on feed, education and ground cover

#### The Australian Feedbase Monitor will provide:

- access to rolling monthly pasture biomass estimates for every Livestock Production Assurance (LPA) account holder, updated every five days
- customised pasture ground cover information sourced from more than 5,000 sites using world-leading monitoring services
- data showing the trends in pasture growth and ground cover dating back to 2017
- support in creating more accurate feed budgets for grazing livestock

#### Benefits to producers

The Australian Feedbase Monitor will provide multiple benefits to producers and the wider red meat industry, including:

- providing the data to back up more accurate and timely grazing decisions, allowing an increase in production and the ability to meet market specifications
- avoiding environmental or welfare issues in grazing enterprises due to increased ability to monitor ground cover and pasture
- increased consumer confidence in the environmental stewardship of red meat producers.

#### Get involved

Want access to the Australian Feedbase Monitor when it launches in the second half of 2022? The tool can only be accessed via MyMLA, so make sure you've registered for MyMLA and linked it to your current LPA accounts. Training and further information will be available through industry events such as MeetUp and BeefUp forums, as well as MLAs communication channels such as Feedback magazine, The Weekly e-newsletter and social media.

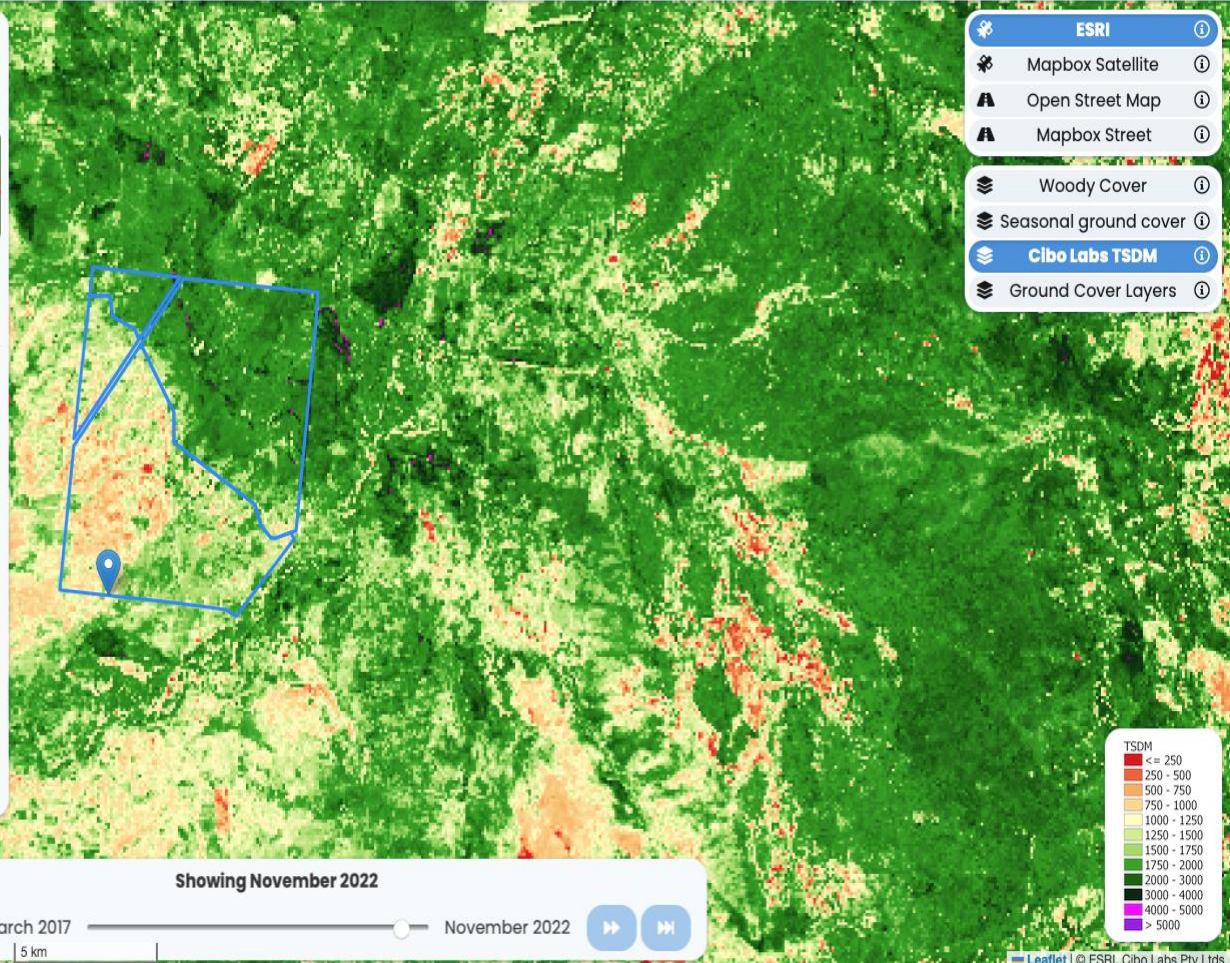
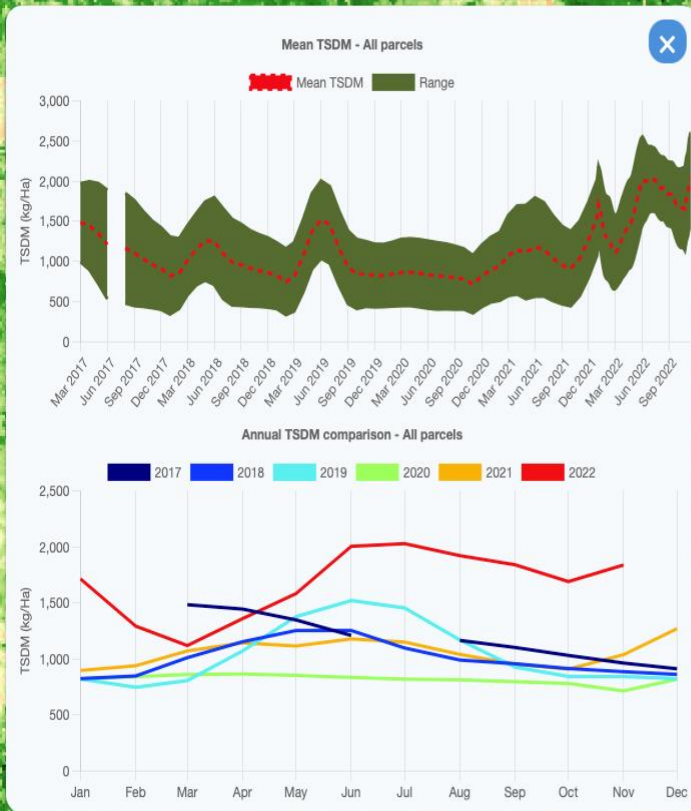
#### More information

Alexis Rogers | Cibo Labs | National Adoption & Extension Manager  
0427 929 317 | [alexis@cilobabs.com.au](mailto:alexis@cilobabs.com.au)

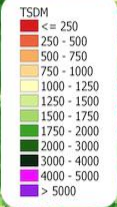
Please read MLA's disclaimer at [mla.com.au/disclaimer](http://mla.com.au/disclaimer). © Meat & Livestock Australia 2022 ABN 39 081 676 364. Published June 2022. MLA acknowledges the funding grants provided by the Australian Government to support the research and development contained in this technical.







- ESRI**
- Mapbox Satellite
- Open Street Map
- Mapbox Street
- Woody Cover
- Seasonal ground cover
- Cibo Labs TSDM**
- Ground Cover Layers



**Showing November 2022**

March 2017
 

 November 2022

5 km

# Take home messages

- Breeding programs should consider on farm traits as much as off farm traits – where are the mutual traits?
- Plan & follow a clear breeding strategy – utilize advantages of heterosis
- Focus on what can be controlled or most easily influenced through management or selection
- Use the science to make informed decisions

# Tools and resources



MLA Profitable Grazing Systems

(<https://www.mla.com.au/extension-training-and-tools/profitable-grazing-systems/>)



MLA – PROGRAZE & More Beef From Pastures



Future Beef ([www.futurebeef.com.au](http://www.futurebeef.com.au))



RaynerAg ([www.raynerag.com.au](http://www.raynerag.com.au))



---

RaynerAg

PO Box 234

ALBION PARK NSW 2527


Phone Number

0427 102 317

Email Address

[alastair@raynerag.com.au](mailto:alastair@raynerag.com.au)

[www.raynerag.com.au](http://www.raynerag.com.au)

 RaynerAg

OUR CONTACT DETAILS

Let's Talk

---

# meatup FORUM

**For the latest in red meat R&D**