



Managing and monitoring your feedbase Australian Feedbase Monitor

Alastair Rayner

National Extension & Adoption Manager

Cibo Labs

A herd of cattle is grazing in a field during the golden hour of sunset. The scene is dominated by large, mature trees with dense foliage. The sun is low on the horizon, creating a warm, golden glow that filters through the leaves and illuminates the scene. The cattle, including several black cows and one grey cow, are scattered across the grassy field. The overall atmosphere is peaceful and rural.

The 7 most expensive words in the cattle
business

"We have always done it this way"



Increasing accuracy of forage assessments

- Cibo Labs was founded in 2018
- The company is focused entirely on supporting and achieving more profitable farms and more sustainable landscapes.
- Cibo Labs utilises world-leading science in remote sensing and machine learning alongside with on-farm knowledge achieving greater understanding of pasture productivity and land condition to every farm and paddock in Australia.

What do we want from forage assessments?

Accurately determine:

- How much feed on offer there is
- How long it will last stock for
- How many stock can be run

Even better

- When do feed gaps occur?
- Can I match forage with supplements?



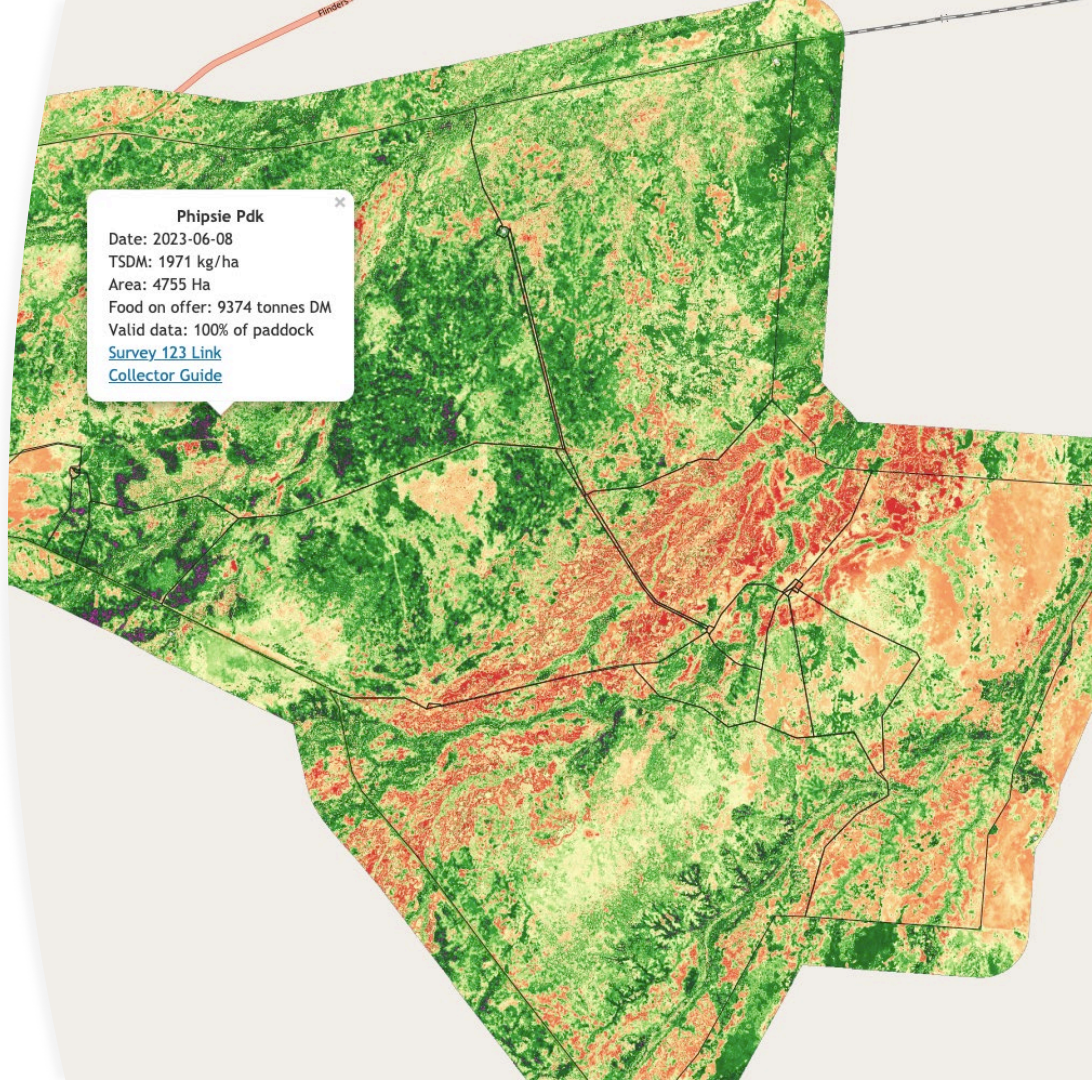
Forage budgets start with assessment

- Reliable budgets – forecasting numbers of stock or days grazing
- Require multiple assessments to ensure accuracy & account for paddock variation
- Time consuming – difficult to achieve reliably across some paddocks & landscapes



Pasture Key – Adding Accuracy to Assessments

- Satellite data – accurate; repeatable and can provide a complete overview of land under management
- Accurate to 10m² – provide 5-day updates
- Reflect what is growing and where it is growing
- Data to be used in forage budgets & forward planning



A man wearing a brown hat, sunglasses, and a light blue shirt is shown from the chest up, looking at a tablet. The tablet displays a map with a green area and some data points. The background is a bright, sunny outdoor setting with a green field and a line of trees under a blue sky with some clouds. A thin blue horizontal line is positioned above the title.

The Australian Feedbase Monitor

- The AFM is a \$4.7m co-funded (50:50) investment by Cibo Labs and the MLA Donor Company
- Freely Accessible to MLA Members through the MyMLA Portal (non-members \$99/year)
- Linked to LPA Accounts (through MyMLA) to create account for each PIC
- Land parcels associated with a PIC can be selected & will generate forage data on a 5-day basis
- Creation of a 30-day rolling average for each PIC on an account

Using the Australian Feedbase Monitor

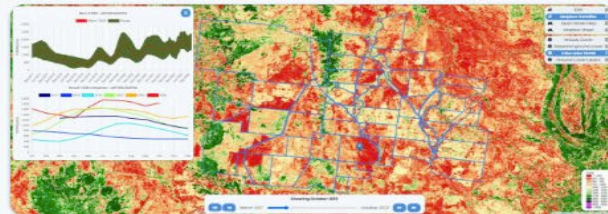


Australian Feedbase Monitor

The Australian Feedbase Monitor (AFM) is a new grazing management tool which gives land managers satellite insights into their feed capabilities.

How can you use the AFM?

- **View insightful satellite data about your property's feed capabilities which is:**
 - generated from European Space Agency's Sentinel 2 mission
 - at a farm-level, with rolling monthly pasture biomass estimates updated every five days
- **Receive data overlays for your farm's pasture biomass and ground cover at 1ha resolution for:**
 - total standing dry matter (TSDM) – the distribution of predicted TSDM as kg/ha across each land parcel
 - ground cover – the percentage of plant material, either alive or dead on or near the soil surface.
- **Use this data to:**
 - understand the trends across your property's pasture base, including rainfall, ground cover and biomass
 - support more objective and accurate feed budgeting, leading to sustainable grazing management decisions
 - improve planning and responsiveness to seasonal changes
 - identify under-performing areas on your property.

[AFM User Guide](#)


Want to take the next step with your forage budgeting?

What is the Cibo Labs PastureKey Service?

The Cibo Labs PastureKey service combines world-leading satellite remote sensing and data science with on-farm knowledge to estimate feed supply for every hectare and to monitor changes in the feedbase and land condition on a weekly basis.

Do you want a higher resolution and statistics at a "paddock" level?

PastureKey is available as an annual subscription service. Pricing depends on the size and number of properties, and the level of service and support you would like. We also provide training on Satellite Assisted Forage Budgeting with the support of the MLA Profitable Grazing Systems (PGS) program.

[Get more info](#)
[Compare AFM and PastureKey](#)

[Add a farm to get started with PastureKey](#)

PastureKey

Satellite Assisted Forage Budgeting



Dashboard

YOUR FARMS

| | | PIC | Size | Attributes |
|---------------|--|-------|--------------|--|
| Rayner1 | AFM Farm Reports | TEST1 | 2,500.9 ha | Manage Share |
| PastoralSA | AFM Farm Reports | TEST2 | 7,599.3 ha | Manage Share |
| Alice Springs | AFM Farm Reports | TEST3 | 350,080.2 ha | Manage Share |
| UNFS | AFM Farm Reports | TEST0 | 486.1 ha | Manage Share |

SET UP FARMS

You are ready to go! We have retrieved your LPA properties linked to your myMLA account.

TEST4 [Set up](#)

TEST5 [Set up](#)

TEST6 [Set up](#)

TEST7 [Set up](#)

TEST8 [Set up](#)

TEST9 [Set up](#)

TESTMODE [Set up](#)

Want to take the next step with your forage budgeting?

What is the Cibolabs PastureKey Service?

The Cibolabs PastureKey service combines world-leading satellite remote sensing and data science with on-farm knowledge to estimate feed supply for every hectare and to monitor changes in the feedbase and land condition on a weekly basis.

Do you want a higher resolution and statistics at a "paddock" level?

PastureKey is available as an annual subscription service. Pricing depends on the size and number of properties, and the level of service and support you would like. We also provide training on Satellite Assisted Forage Budgeting with the support of the MLA Profitable Grazing Systems (PGS) program.

[Get more info](#)
[Compare AFM and PastureKey](#)
[Get started with PastureKey](#)

PastureKey

Satellite Assisted Forage Budgeting



PROFILE

Update your profile

[Update profile](#)

SUBSCRIPTIONS

• AFM Free - MLA Member

[Manage Subscriptions](#)
[New Subscriptions available](#)

RESOURCES

- [AFM User Guide](#)
- [Farm Reports User Guide](#)
- [More information about the AFM](#)

SUPPORT

For technical questions about using the AFM tool, please contact support@cibolabs.com.au

+ Farm setup

1. Farm Details

2. Farm Address

Street Address

Suburb

State Postcode

Or

Upload a farm boundary file.

Accepted file types: .json, .geojson, .kml

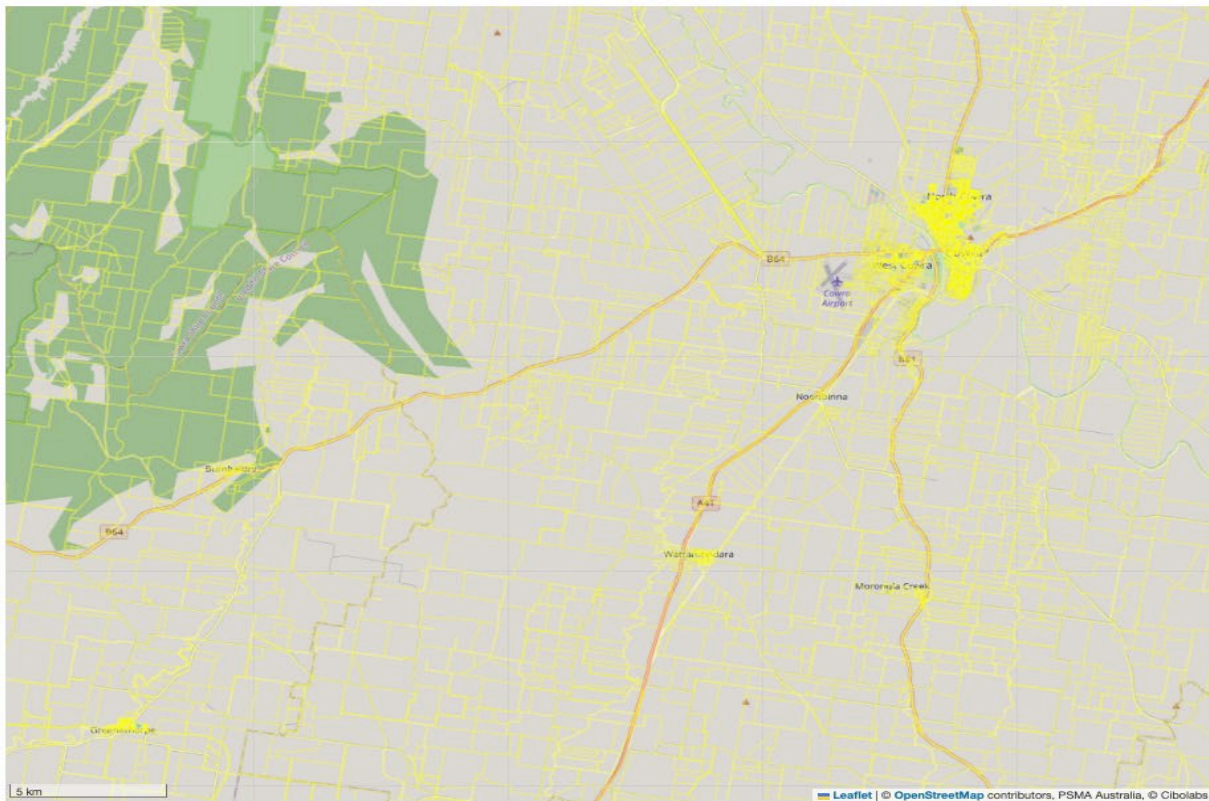
3. Select Parcels



Locate your property on the map and select one or more polygons that make up your property.

On the map, left click to select a parcel of land, left click it again to de-select it.

0 Parcels selected





+ Farm setup

1. Farm Details

2. Farm Address

Street Address

Suburb

State Postcode

NSW

2794

Or

Upload a farm boundary file.

 no file selected

Accepted file types: .json, .geojson, .kml

3. Select Parcels



Locate your property on the map and select one or more polygons that make up your property.

On the map, left click to select a parcel of land, left click it again to de-select it.

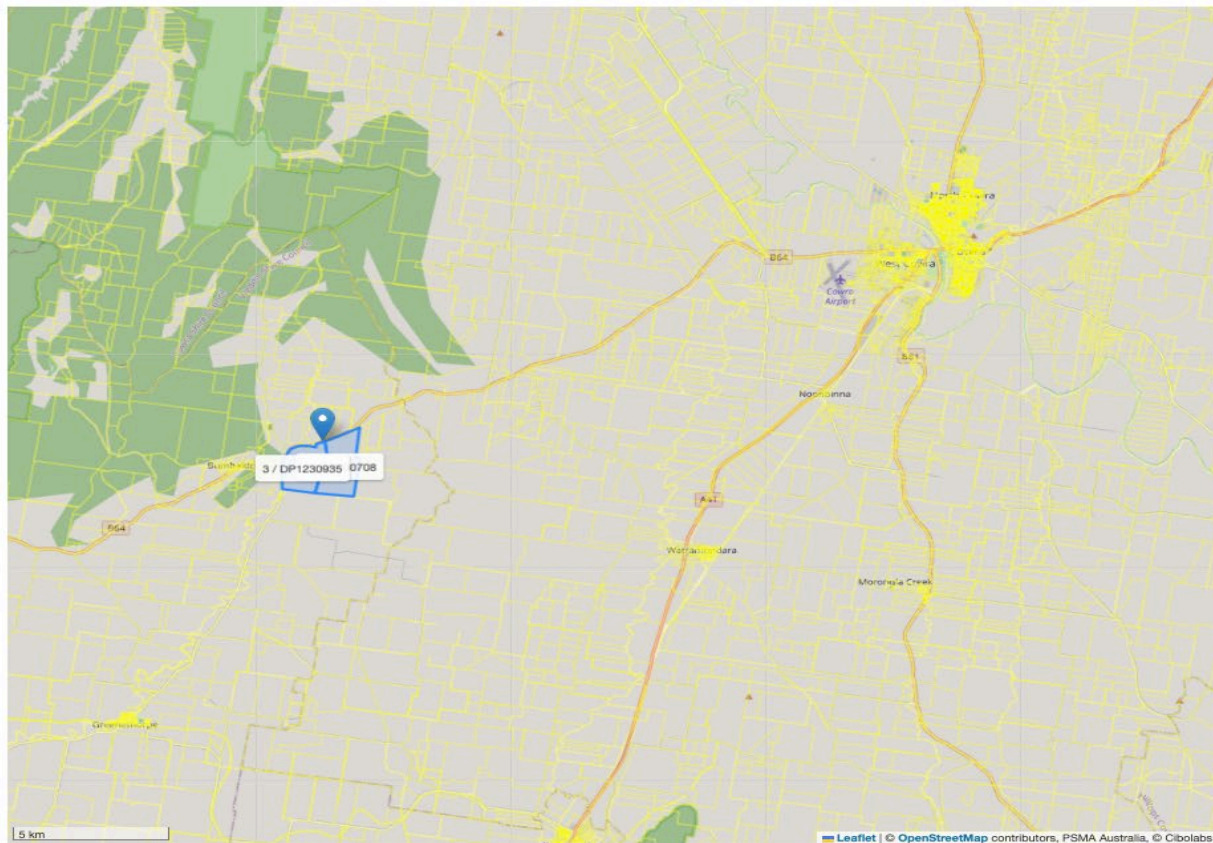
2 Parcels selected:

4. Locate your gate



Drag the gate location marker to the front gate of your property.

The gate location marker is created on the map when you select your 1st parcel.





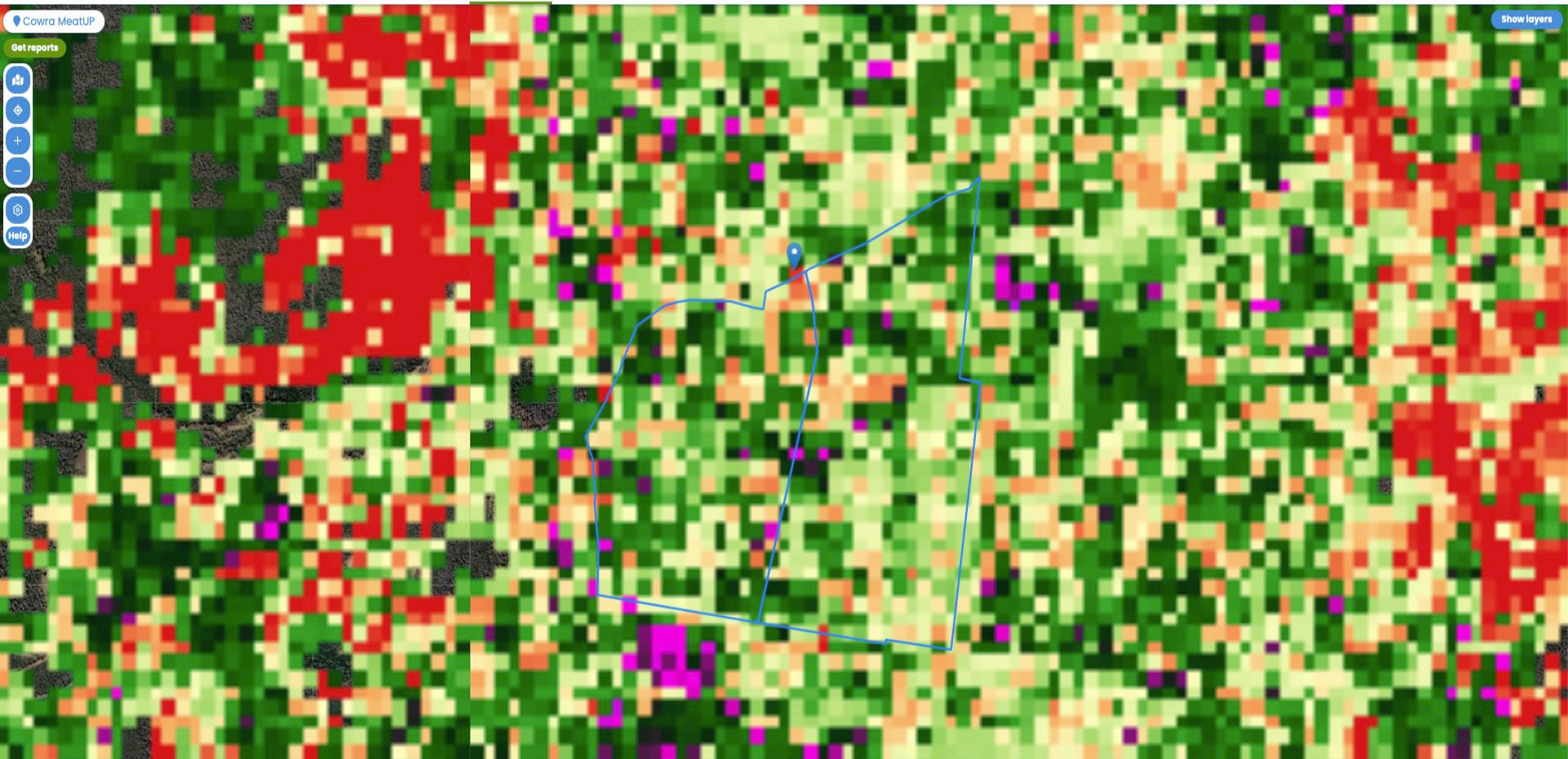
Cowra MeatUP

Show layers

Get reports



Help



Map navigation controls including a home button, left arrow, "Aug 2023", right arrow, and a full-screen button. Below these is a timeline slider with "Mar 2017" on the left and "Aug 2023" on the right, with a vertical bar indicating the current date.

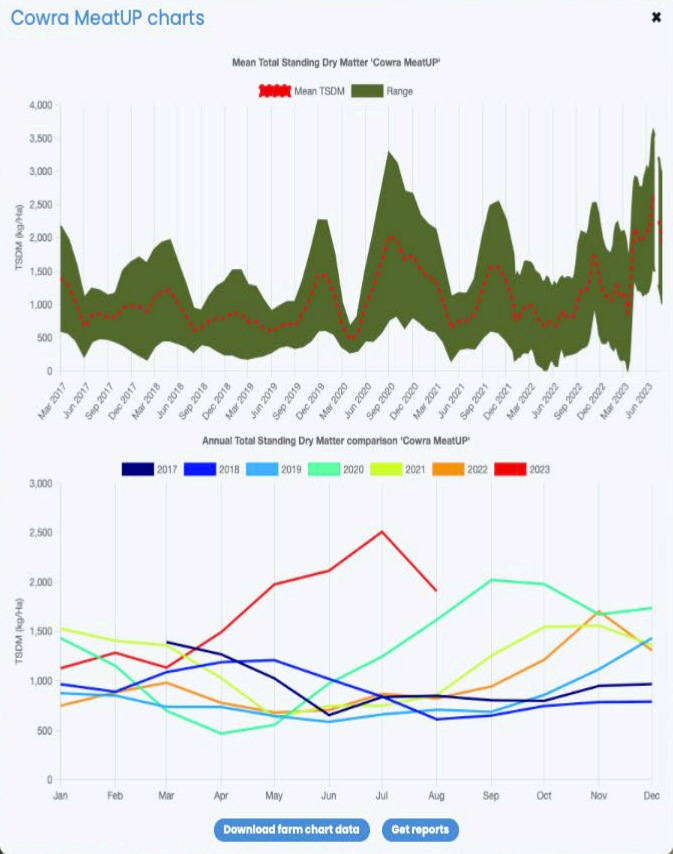
Show legend

Show layers

Cowra MeatUP

Get reports

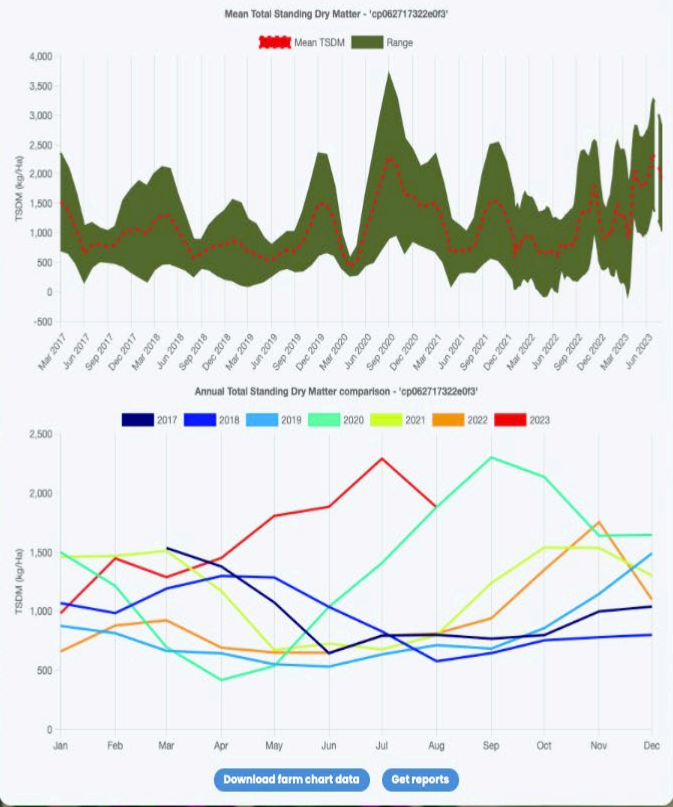
Navigation icons: Home, Search, Add, Minus, Settings, Help



Navigation controls: Home, Previous, Aug 2023, Next, Home, Date range: Mar 2017 to Aug 2023

Show legend

Selected parcel charts

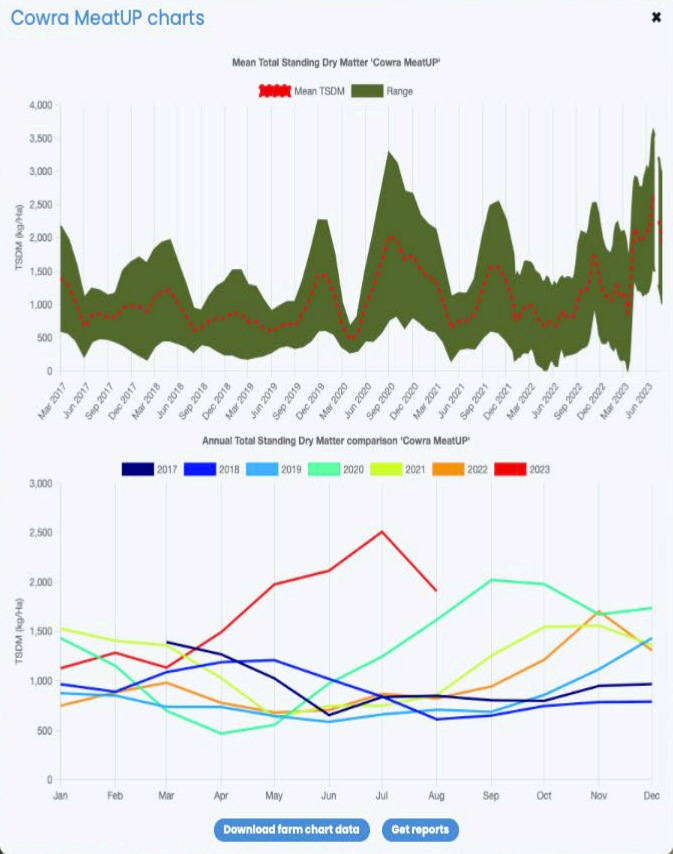


Show layers

Cowra MeatUP

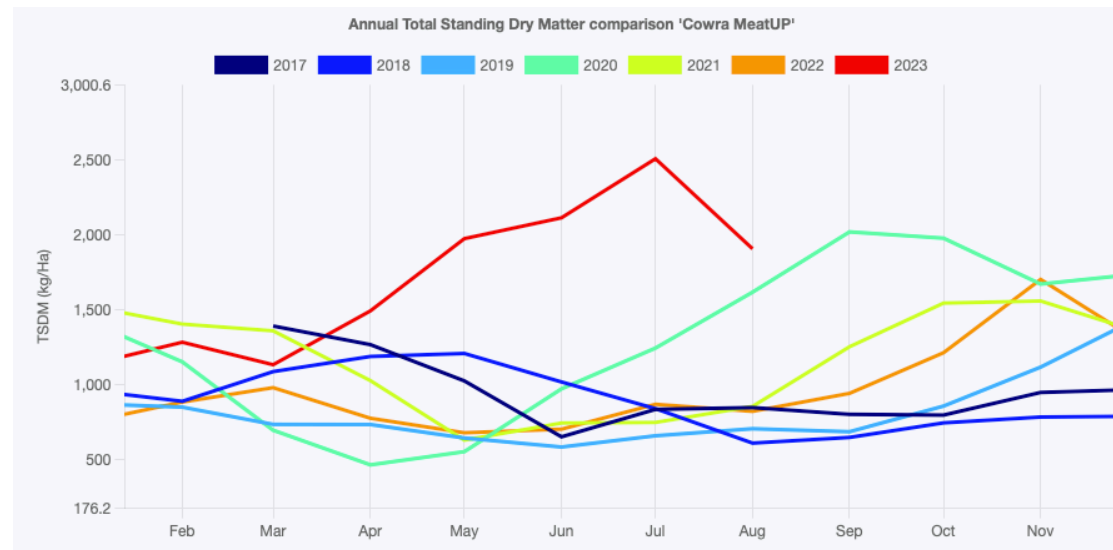
Get reports

Navigation icons: Home, Location, Zoom in, Zoom out, Refresh, Help



Navigation controls: Home, Previous, Aug 2023, Next, Home, Date range: Mar 2017 to Aug 2023

Show legend



Using the AFM for strategic decisions

The AFM provides a baseline

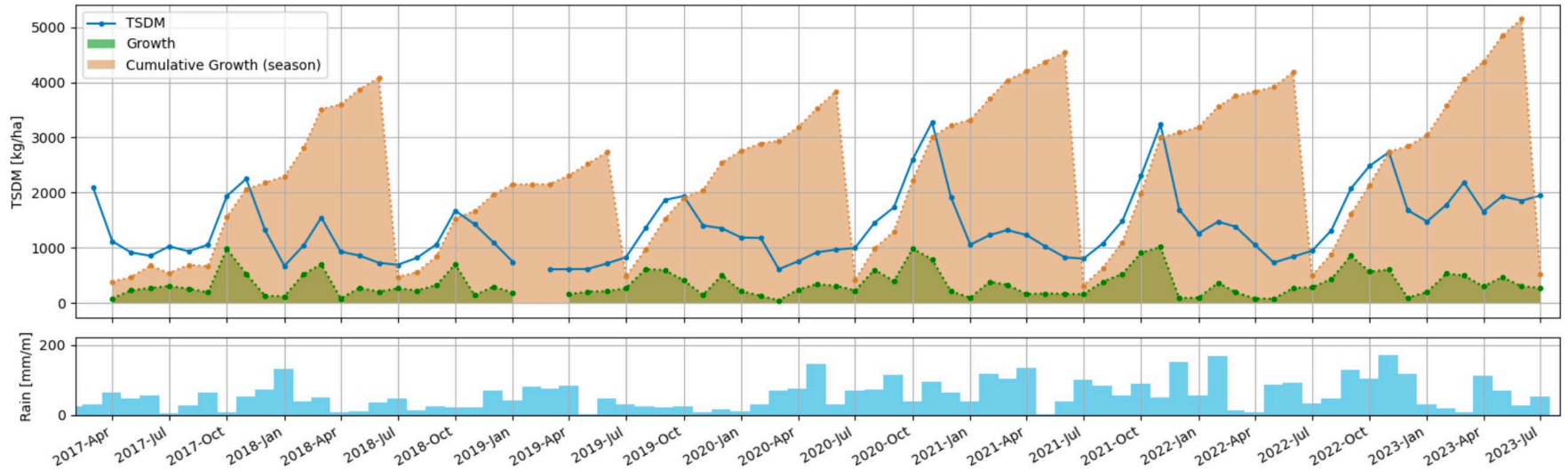
- Is the season performing better or worse
- Reflect on past decisions
- A starting value for forage budgets

Forage budget – how much do we grow

- Basic forage budgets
 - Require accurate Feed on Offer
 - Pasture growth – kg/DM/day
 - Livestock number & class

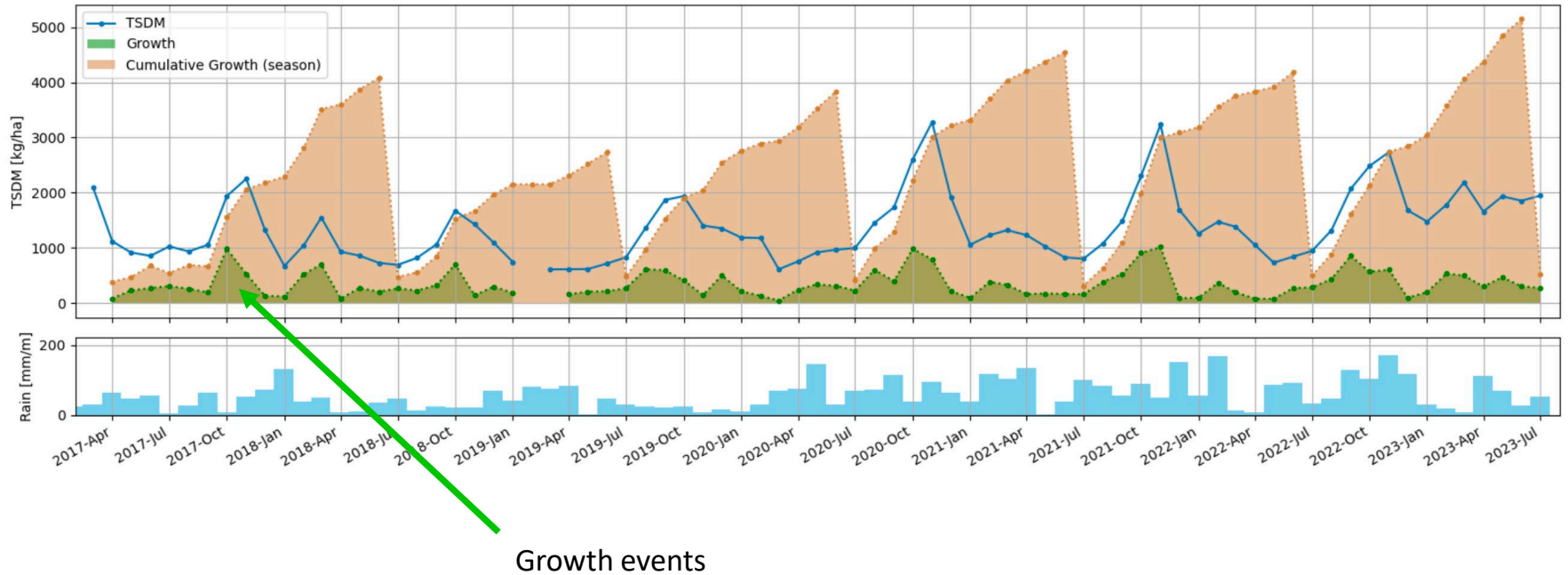
| Field | Data |
|---|--|
| Paddock | |
| a) Paddock size | 35.0 ha |
| b) Current feed on offer (FOO) | 1729.0 Kg DM/ha |
| c) Pasture quality | 60% dig, 8.2 MJ ME/kg - Gone to seed ✕ ▾ |
| d) Consumption wastage factor | 20.0 % |
| e) Pasture growth | 3.0 Kg DM/ha/day |
| f) Desired FOO when animals removed | 1200.0 Kg DM/ha |
| Stock 1 | |
| Stock type | Cows ✕ ▾ |
| Average weight | 600 kg/Hd ✕ ▾ |
| Physiological state | Late Preg (Last 3 Months) ✕ ▾ |
| Twins / singles / not applicable | Not Applicable ✕ ▾ |
| g) Number of animals grazing | 68.0 |
| h) Estimated pasture intake (kg DM/Hd/day) | 7.6 |
| Maintenance energy required (MJ ME/Hd/day) | 99 |
| Stock 2 (optional) ▾ | |
| Stock 3 (optional) ▾ | |
| Results | |
| m) Feed on offer (Kg DM/ha) | 529 |
| n) Daily intake per ha + wastage (Kg DM/ha/day) | 17.8 |
| o) Change in feed on offer (Kg DM/ha/day) | -14.8 |
| Number of days paddock will last | 35.8 |

Historically what do we grow?

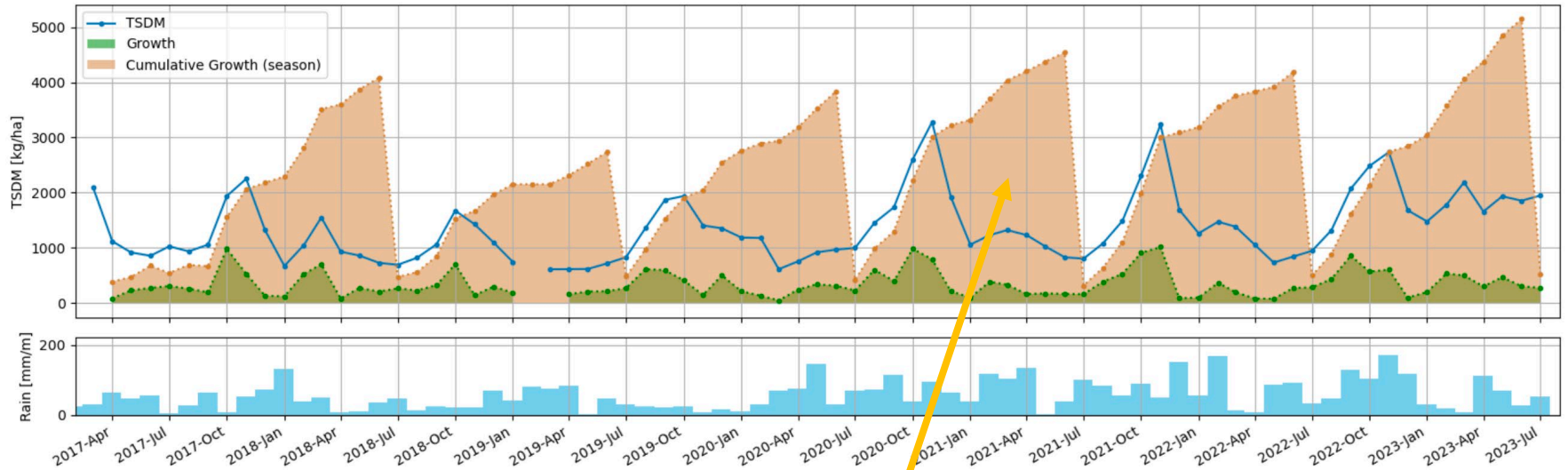


Pasture Growth records

What does this mean?



What does this mean?



Accumulated growth (month on month)

Historically what do we grow?





Using the data for better feeding decisions

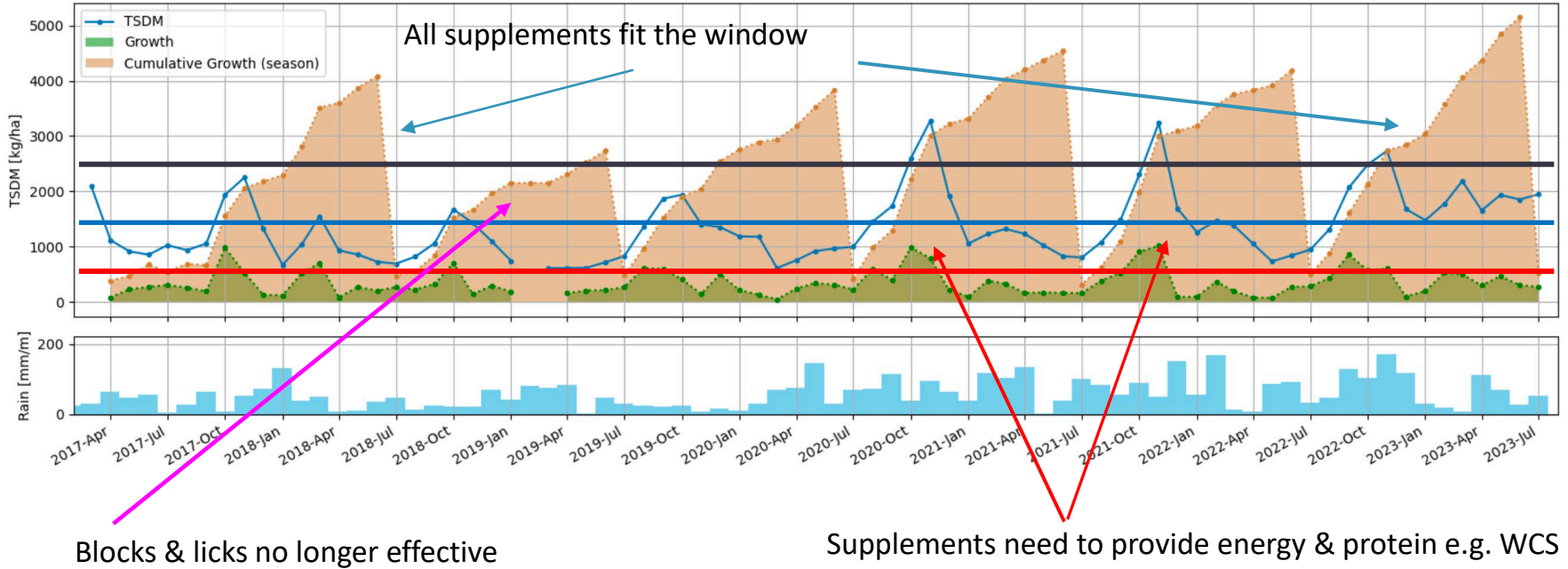
- Supplementation decisions should reflect
 - Pastures
 - Livestock Needs
- Supplements have windows of usefulness

All protein supplements have “windows of usefulness”

Table 1: Window of Usefulness for Protein Supplements by Herbage Mass (D.M)

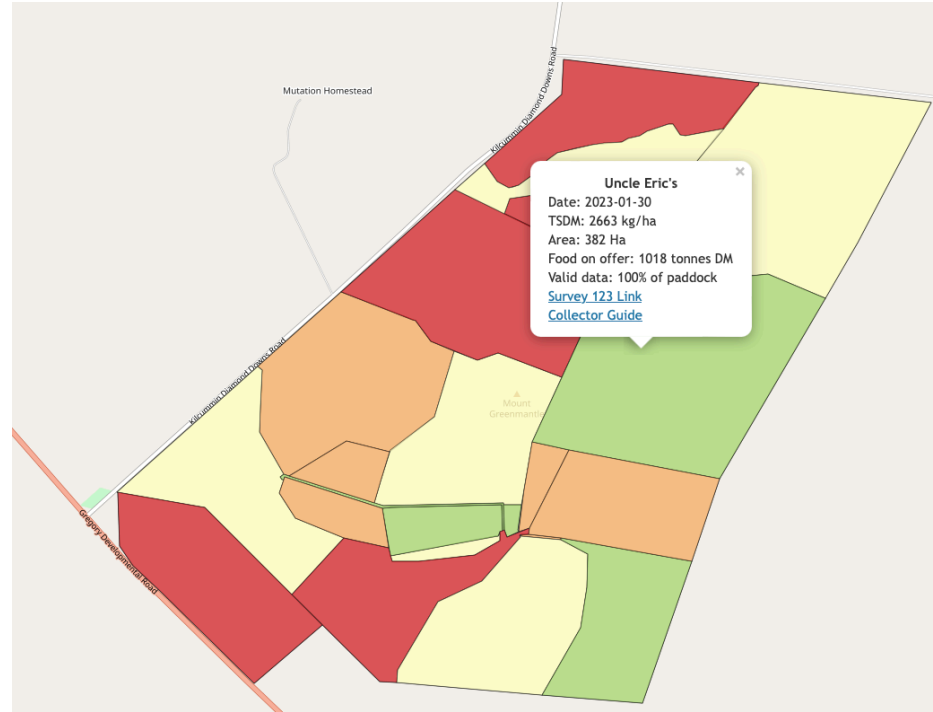
| Protein Source | ‘Plentiful’ Over 2,500 kg/ha | ‘Reducing’ 2,500-1,500 kg/ha | ‘Low’ 1,500-800* kg/ha |
|------------------------------|---|---------------------------------|---------------------------|
| Blocks | √√√ | √√ | N.S. |
| Roller drum | √√√ | √√ | N.S. |
| Protein meals | √√√ | √√√ | √ |
| Manufactured protein pellets | √√√ | √√√ | √ |
| Lupins | √√√ | √√√ | √ |
| White Cotton Seed | √√√ | √√√ | √ |
| √√√ | Within window | | |
| √√ | The window is closing make your next decision now. | | |
| √ | The window is all but closed, move to supplying energy. | | |
| N.S. | The window is closed, move to supplying energy not protein. | | |
| * | Below 800 kg DM/ha destock the paddock | | |

Options for supplementation



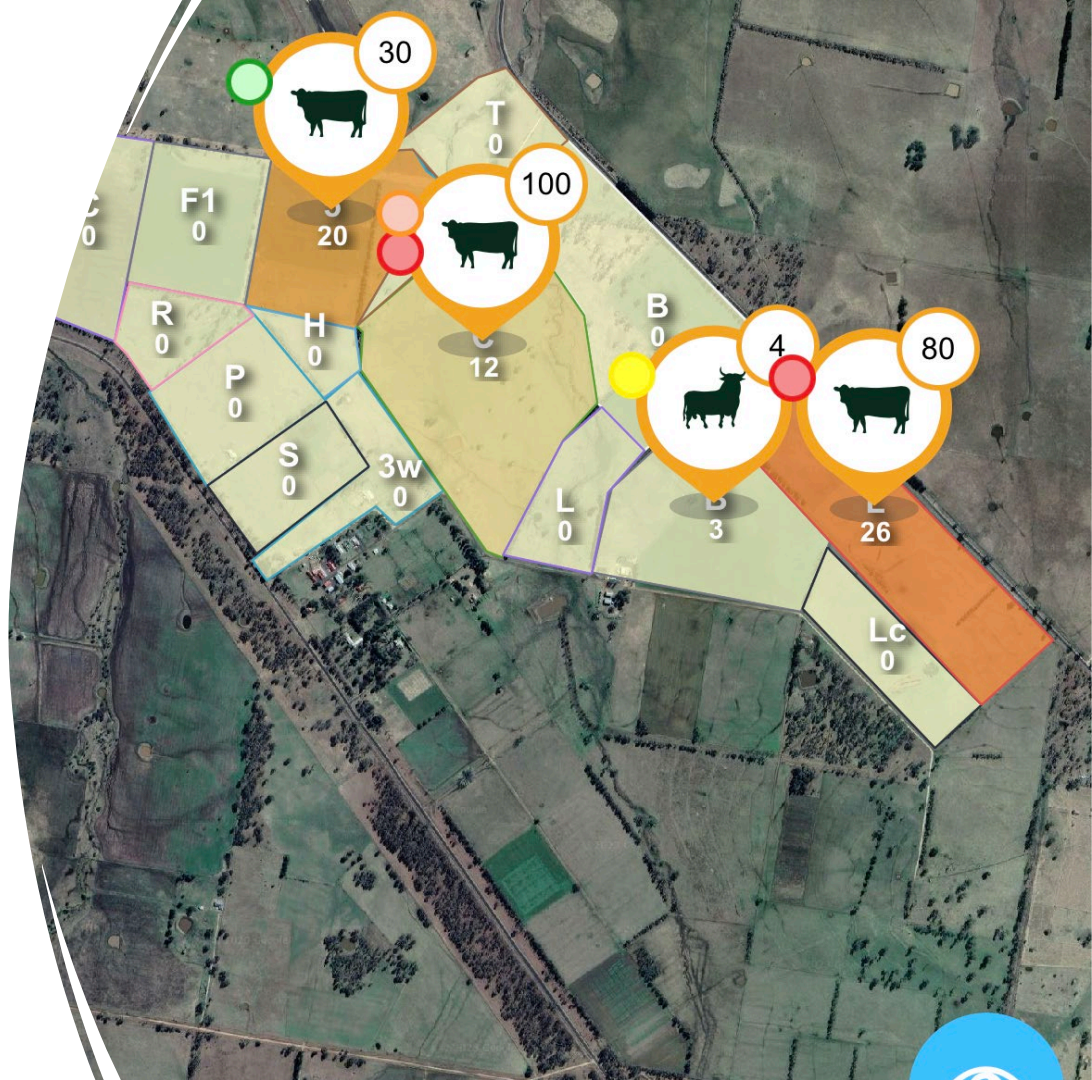
Feed budgets

- Moving from AFM to PastureKey
- Paddock level (10m²) resolution
- 15 day rolling average
- Data sharing across platforms such as AgriWebb



Integrate with AgriWebb

- Paddock details are automatically updated from Cibo Labs
- You input your growth rates and you can adjust your FOO manually for each paddock



Take home messages

- The AFM offers all producers access to accurate, regular and objective assessments
- Access is free to MLA members (make sure your details are correct with MLA membership if you receive a message saying you are not recognized)
- MLA Help Desk on 1800 865 255 or send an email to membership@mila.com.au
- Use the information to add value & accuracy to your decisions & with other tools such as feed budget & stocking rate calculators

Tools and resources

- www.cibolabs.com.au
- www.mla.com.au/mymla
- <https://www.mla.com.au/extension-training-and-tools/>

A large herd of cattle, including brown, white, and black cows, is gathered in a green field. In the background, a person wearing a hat and light-colored clothing is visible, possibly herding the animals. The scene is set in a rural, open landscape with a line of trees in the distance under a clear sky.

CIBO LABS

support@cibolabs.com.au

www.cibolabs.com.au

 Cibo Labs